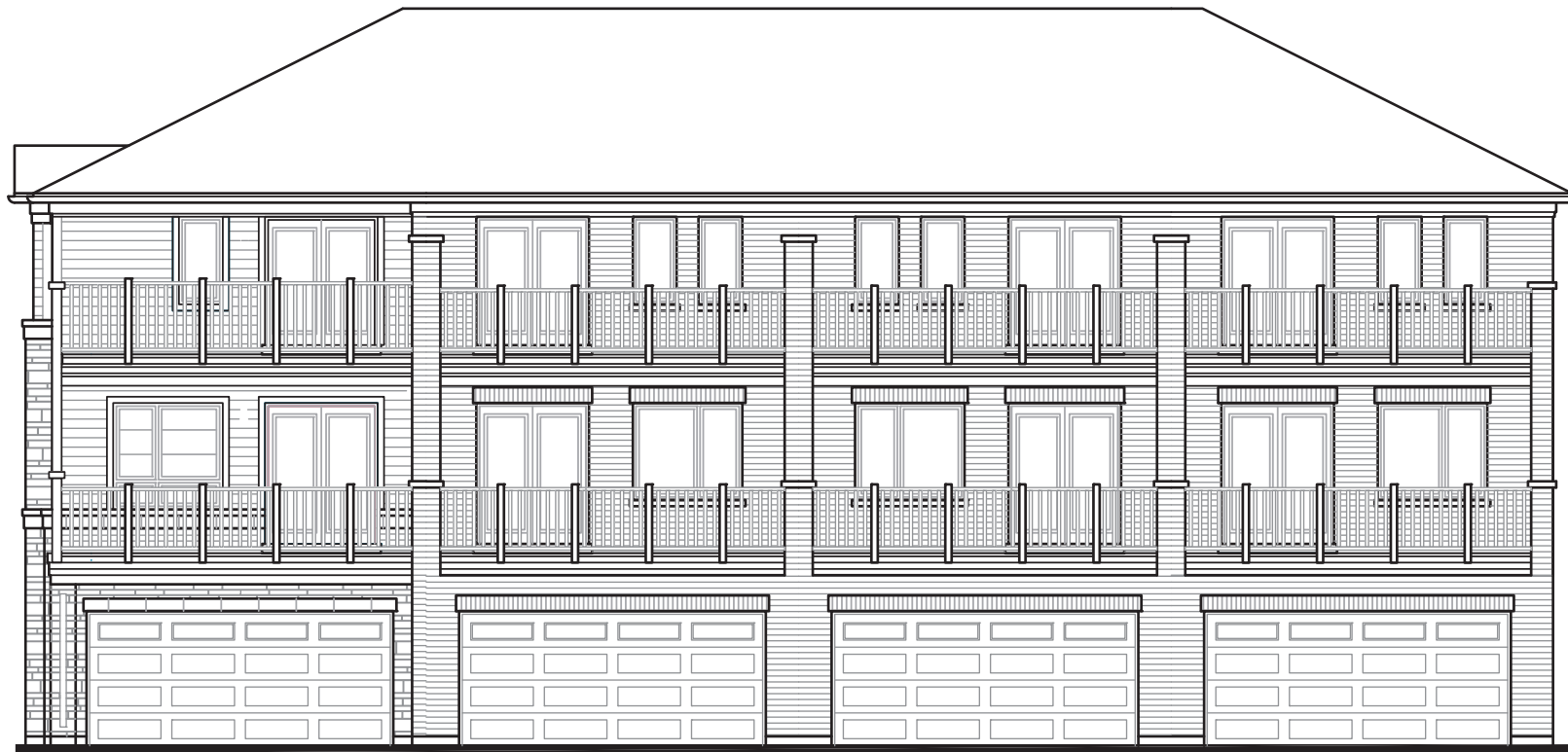


BLOCK 1 • REAR ELEVATION • Douglas Sanders Lane

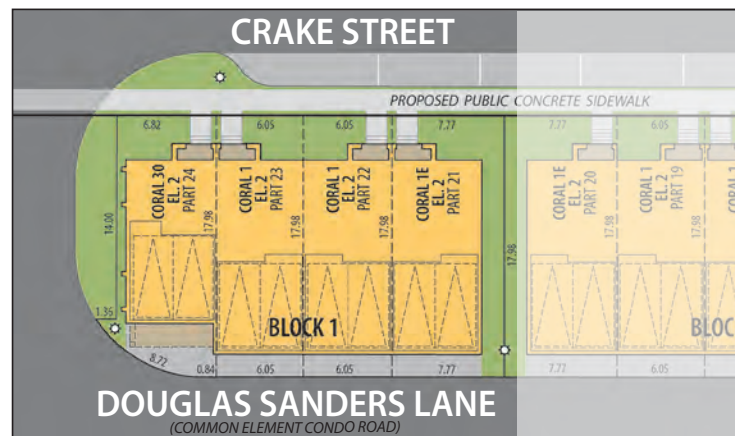


CORAL 30
ELEV. 2 • Part 24
1,861 Sq.Ft.

CORAL 1
ELEV. 2 • Part 23
1,922 Sq.Ft.

CORAL 1
ELEV. 2 • Part 22
1,922 Sq.Ft.

CORAL 1E
ELEV. 2 • Part 21
1,962 Sq.Ft.



BLOCK 1 • SITE PLAN



CORAL 1E • ELEV. 2 • Part 21 END ELEVATION

Main exterior building materials for front elevation include: Elev. 2 • Cultured Stone + Brick + Prefinished Aluminum Siding

BLOCK 1 • FRONT ELEVATION • Crake Street

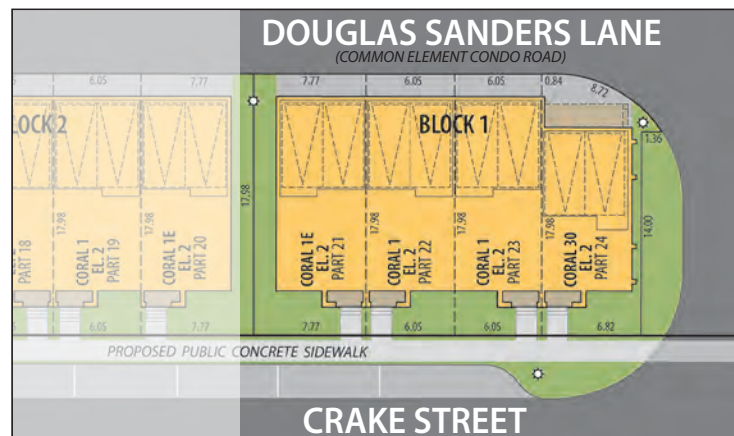


CORAL 1E
ELEV. 2 • Part 21
1,962 Sq.Ft.

CORAL 1
ELEV. 2 • Part 22
1,922 Sq.Ft.

CORAL 1
ELEV. 2 • Part 23
1,922 Sq.Ft.

CORAL 30
ELEV. 2 • Part 24
1,861 Sq.Ft.



BLOCK 1 • SITE PLAN



CORAL 30 • ELEV. 2 • Part 24 END ELEVATION

Main exterior building materials for front elevation include: Elev. 2 • Cultured Stone + Brick + Prefinished Aluminum Siding

Salizada Residences Inc. • 19'10" Condo Towns • March 2026 Unit setback and roofline may vary due to siting. Steps may vary at any exterior entrance ways due to grading variance. All dimensions are approximate only and subject to change without notice. Actual usable floor space may vary from stated floor area. All renderings are artist's concept, specifications, architectural and mechanical detailing are subject to minor modifications. Site plan not to scale and provided for general information only. All details should be confirmed with sales representative and/or municipality. Distances shown are in metres and can be converted to feet by dividing by 0.3048. E.&O.E.

BLOCK 2 • REAR ELEVATION • Douglas Sanders Lane



CORAL 1E
ELEV. 2 • Part 20
1,962 Sq.Ft.

CORAL 1
ELEV. 2 • Part 19
1,922 Sq.Ft.

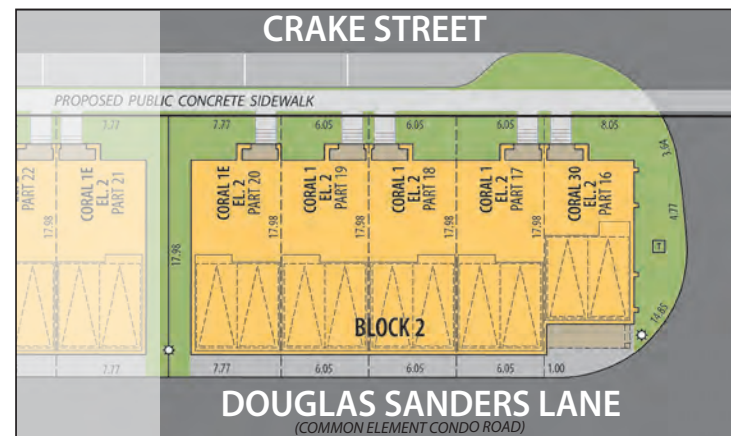
CORAL 1
ELEV. 2 • Part 18
1,922 Sq.Ft.

CORAL 1
ELEV. 2 • Part 17
1,922 Sq.Ft.

CORAL 30
ELEV. 2 • Part 16
1,861 Sq.Ft.



CORAL 1E • ELEV. 2 • Part 20 END ELEVATION



BLOCK 2 • SITE PLAN

Main exterior building materials for front elevation include: Elev. 2 • Cultured Stone + Brick + Prefinished Aluminum Siding

BLOCK 2 • FRONT ELEVATION • Crake Street



CORAL 30
ELEV. 2 • Part 16
1,861 Sq.Ft.

CORAL 1
ELEV. 2 • Part 17
1,922 Sq.Ft.

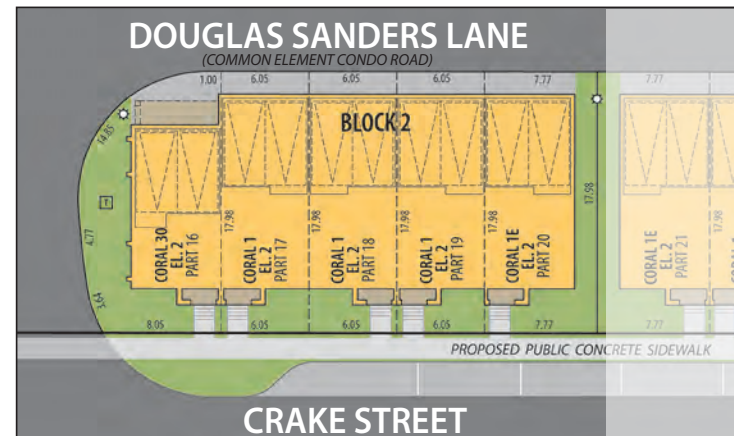
CORAL 1
ELEV. 2 • Part 18
1,922 Sq.Ft.

CORAL 1
ELEV. 2 • Part 19
1,922 Sq.Ft.

CORAL 1E
ELEV. 2 • Part 20
1,962 Sq.Ft.



CORAL 30 • ELEV. 2 • Part 16 END ELEVATION



BLOCK 2 • SITE PLAN

Main exterior building materials for front elevation include: Elev. 2 • Cultured Stone + Brick + Prefinished Aluminum Siding

Salizada Residences Inc. • 19'10" Condo Towns • March 2026 Unit setback and roofline may vary due to siting. Steps may vary at any exterior entrance ways due to grading variance. All dimensions are approximate only and subject to change without notice. Actual usable floor space may vary from stated floor area. All renderings are artist's concept, specifications, architectural and mechanical detailing are subject to minor modifications. Site plan not to scale and provided for general information only. All details should be confirmed with sales representative and/or municipality. Distances shown are in metres and can be converted to feet by dividing by 0.3048. E.&O.E.

BLOCK 3 • REAR ELEVATION • Douglas Sanders Lane



CORAL 10
ELEV. 1 • Part 15
1,977 Sq.Ft.

CORAL 1
ELEV. 1 • Part 14
1,926 Sq.Ft.

CORAL 1
ELEV. 1 • Part 13
1,926 Sq.Ft.

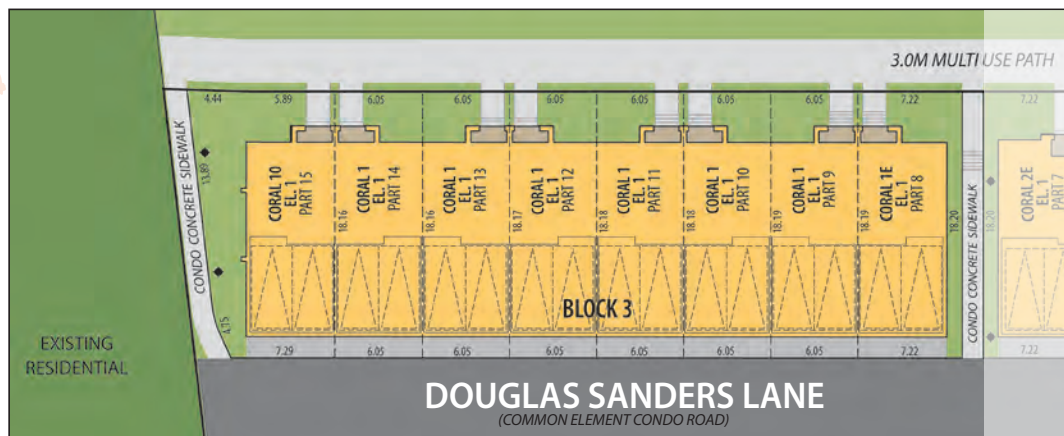
CORAL 1
ELEV. 1 • Part 12
1,926 Sq.Ft.

CORAL 1
ELEV. 1 • Part 11
1,926 Sq.Ft.

CORAL 1
ELEV. 1 • Part 10
1,926 Sq.Ft.

CORAL 1
ELEV. 1 • Part 9
1,926 Sq.Ft.

CORAL 1E
ELEV. 1 • Part 8
1,971 Sq.Ft.



BLOCK 3 • SITE PLAN



CORAL 1E • ELEV. 1 • Part 8 END ELEVATION

Main exterior building materials for front elevation include: Elev. 1 • Cultured Stone + Brick

BLOCK 3 • FRONT ELEVATION • Leslie Street



CORAL 1E
ELEV. 1 • Part 8
1,971 Sq.Ft.

CORAL 1
ELEV. 1 • Part 9
1,926 Sq.Ft.

CORAL 1
ELEV. 1 • Part 10
1,926 Sq.Ft.

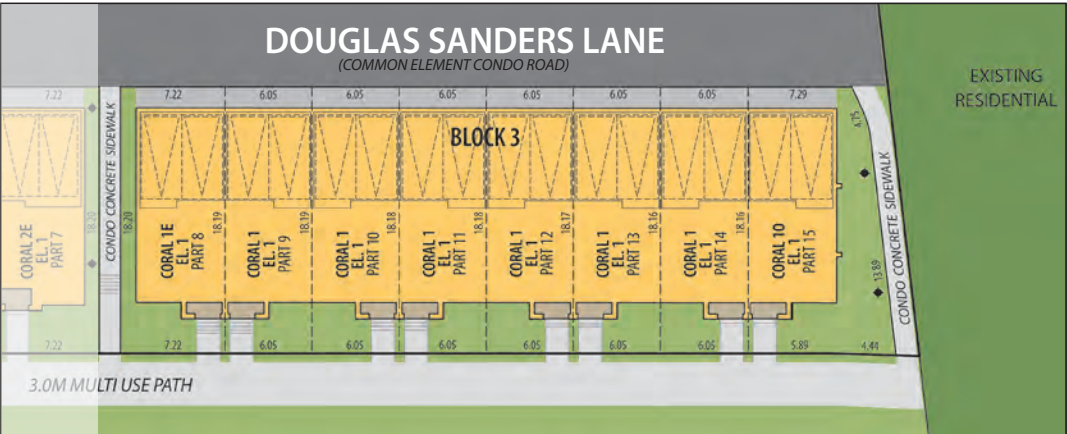
CORAL 1
ELEV. 1 • Part 11
1,926 Sq.Ft.

CORAL 1
ELEV. 1 • Part 12
1,926 Sq.Ft.

CORAL 1
ELEV. 1 • Part 13
1,926 Sq.Ft.

CORAL 1
ELEV. 1 • Part 14
1,926 Sq.Ft.

CORAL 10
ELEV. 1 • Part 15
1,977 Sq.Ft.



BLOCK 3 • SITE PLAN



CORAL 10 • ELEV. 1 • Part 15 END ELEVATION

Main exterior building materials for front elevation include: Elev. 1 • Cultured Stone + Brick

Salizada Residences Inc. • 19'10" Condo Towns • March 2026 Unit setback and roofline may vary due to siting. Steps may vary at any exterior entrance ways due to grading variance. All dimensions are approximate only and subject to change without notice. Actual usable floor space may vary from stated floor area. All renderings are artist's concept, specifications, architectural and mechanical detailing are subject to minor modifications. Site plan not to scale and provided for general information only. All details should be confirmed with sales representative and/or municipality. Distances shown are in metres and can be converted to feet by dividing by 0.3048. E.&O.E.

BLOCK 4 • REAR ELEVATION • Douglas Sanders Lane



CORAL 2E
ELEV. 1 • Part 7
1,990 Sq.Ft.

CORAL 2
ELEV. 1 • Part 6
1,945 Sq.Ft.

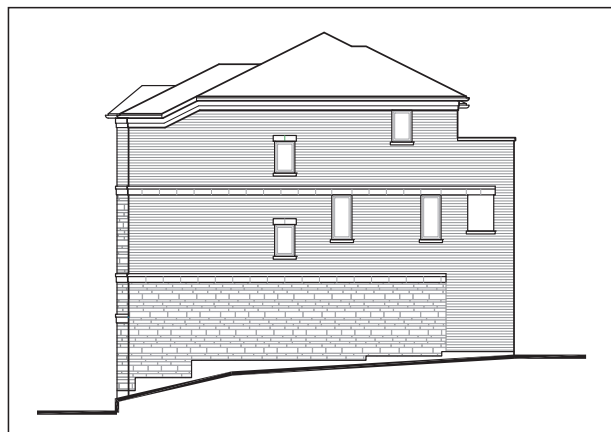
CORAL 2
ELEV. 1 • Part 5
1,945 Sq.Ft.

CORAL 2
ELEV. 1 • Part 4
1,945 Sq.Ft.

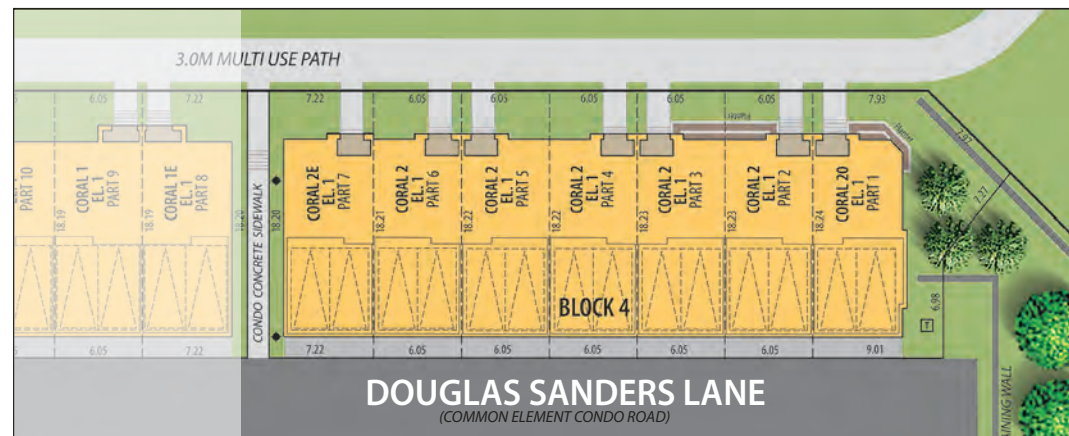
CORAL 2
ELEV. 1 • Part 3
1,945 Sq.Ft.

CORAL 2
ELEV. 1 • Part 2
1,945 Sq.Ft.

CORAL 20
ELEV. 1 • Part 1
2,012 Sq.Ft.



CORAL 2E • ELEV. 1 • Part 7 END ELEVATION



BLOCK 4 • SITE PLAN

Main exterior building materials for front elevation include: Elev. 1 • Cultured Stone + Brick

BLOCK 4 • FRONT ELEVATION • Leslie Street



CORAL 20
ELEV. 1 • Part 1
2,012 Sq.Ft.

CORAL 2
ELEV. 1 • Part 2
1,945 Sq.Ft.

CORAL 2
ELEV. 1 • Part 3
1,945 Sq.Ft.

CORAL 2
ELEV. 1 • Part 4
1,945 Sq.Ft.

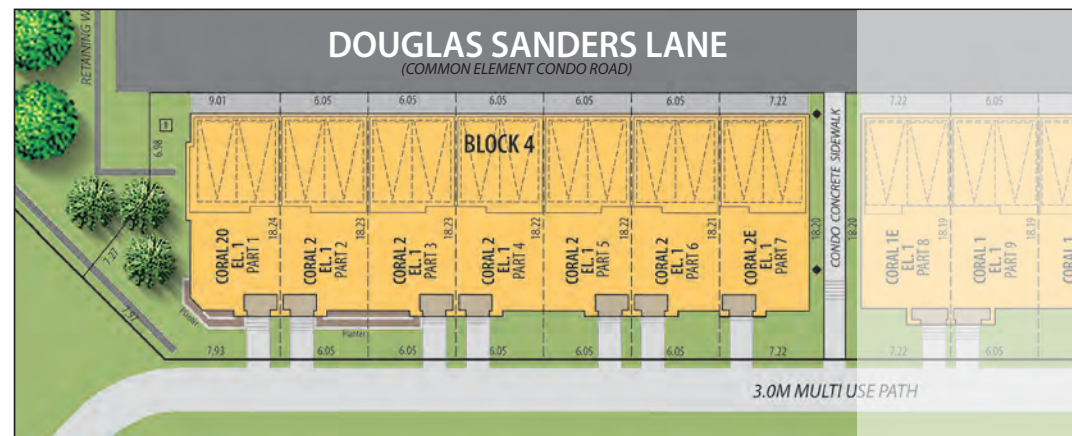
CORAL 2
ELEV. 1 • Part 5
1,945 Sq.Ft.

CORAL 2
ELEV. 1 • Part 6
1,945 Sq.Ft.

CORAL 2E
ELEV. 1 • Part 7
1,990 Sq.Ft.



CORAL 20 • ELEV. 1 • Part 1 END ELEVATION

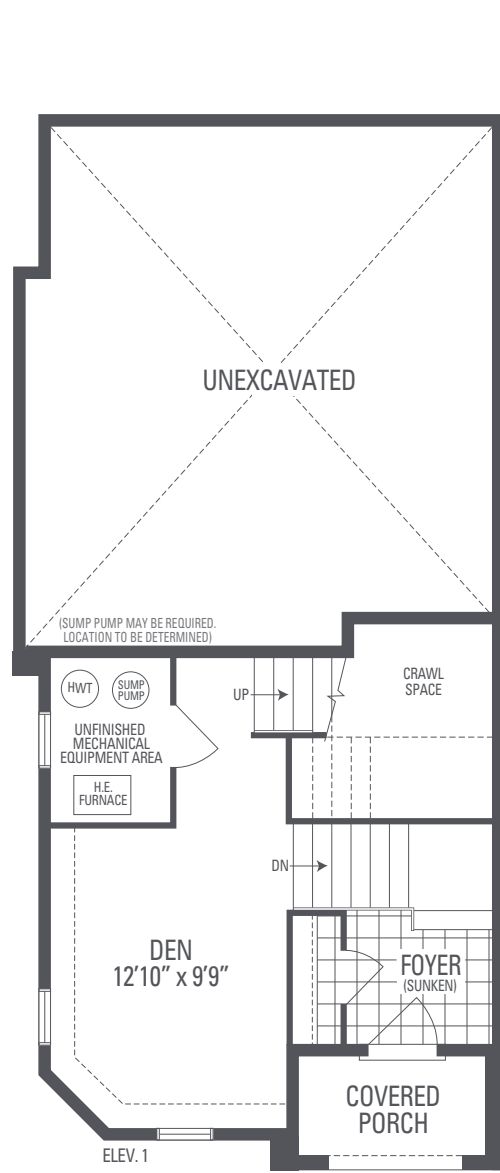


BLOCK 4 • SITE PLAN

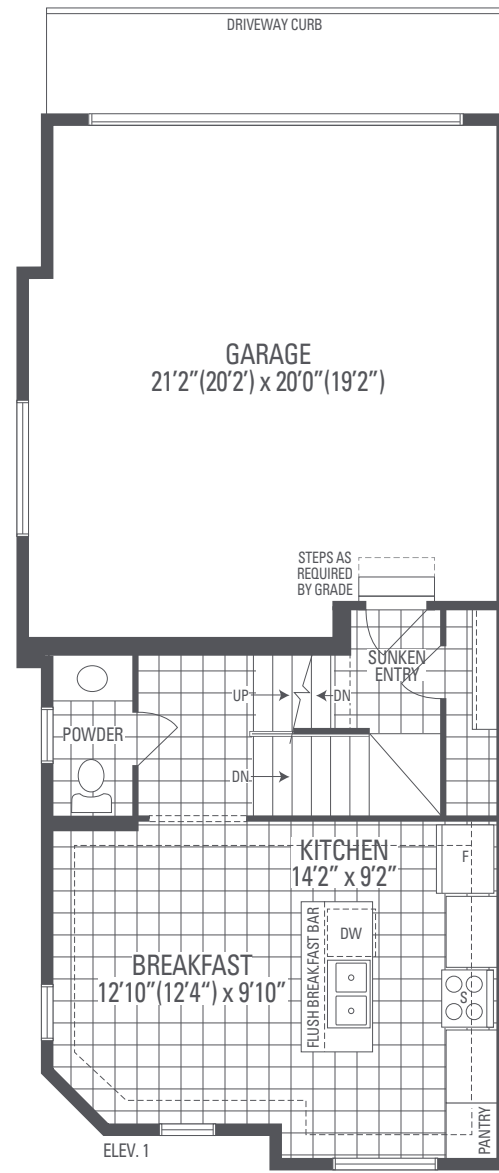
Main exterior building materials for front elevation include: Elev. 1 • Cultured Stone + Brick

CORAL 20

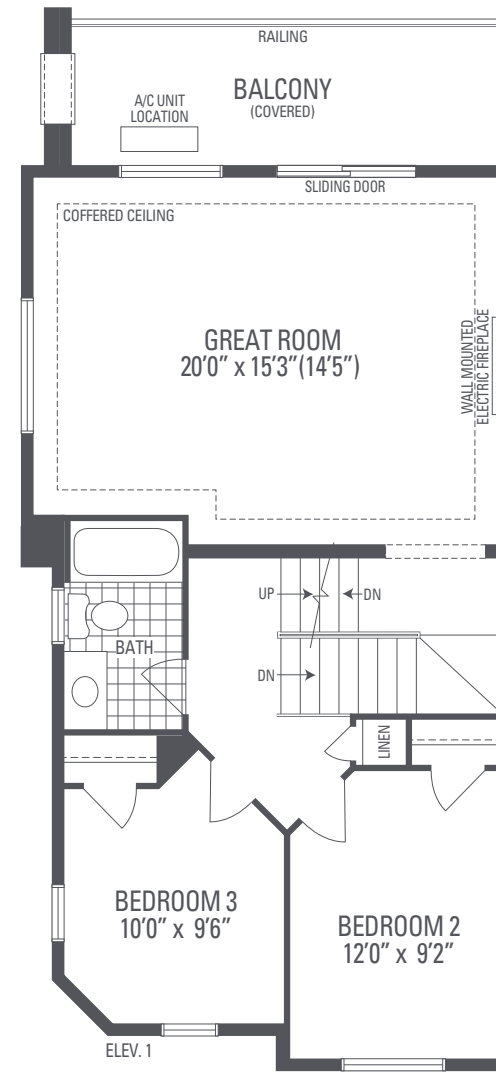
Elevation 1 • 2,012 sq.ft.



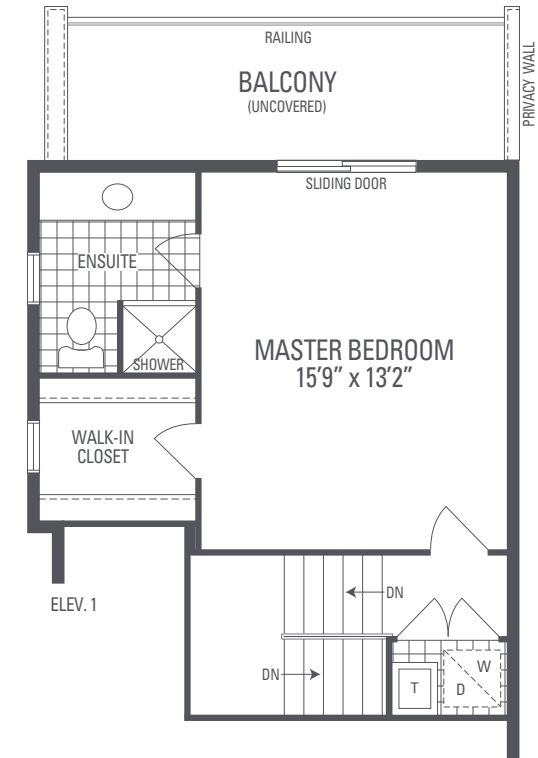
GROUND LEVEL



MAIN LEVEL



UPPER MAIN LEVEL



UPPER LEVEL

Main exterior building materials for front include: Elev. 1 • Cultured Stone + Brick

Salizada Residences Inc. • 19'10" Condo Towns • March 2026

NOTE: Orientation of home may be reversed and purchaser agrees to accept the same. Unit setback and roofline may vary due to siting. Steps may vary at any exterior entrance ways due to grading variance. All dimensions are approximate only and subject to change without notice. Actual usable floor space may vary from stated floor area. All renderings are artist's concept, specifications, architectural and mechanical detailing are subject to minor modifications. Mechanical wall encroachments may be required into finished rooms and garage spaces. E.&O.E.