

HERITAGE 3

ELEVATION 4 • 1,980 SQ.FT. | ELEVATION 5 • 1,989 SQ.FT. | ELEVATION 6 • 1,980 SQ.FT.

(SHOWN ATTACHED TO THE HERITAGE 12, SEE BELOW)



ELEVATION 3

HERITAGE 12 • ELEVATION 3

HERITAGE 3 • ELEVATION 6



ELEVATION 1

HERITAGE 12 • ELEVATION 1

ELEVATION 4

HERITAGE 3 • ELEVATION 4

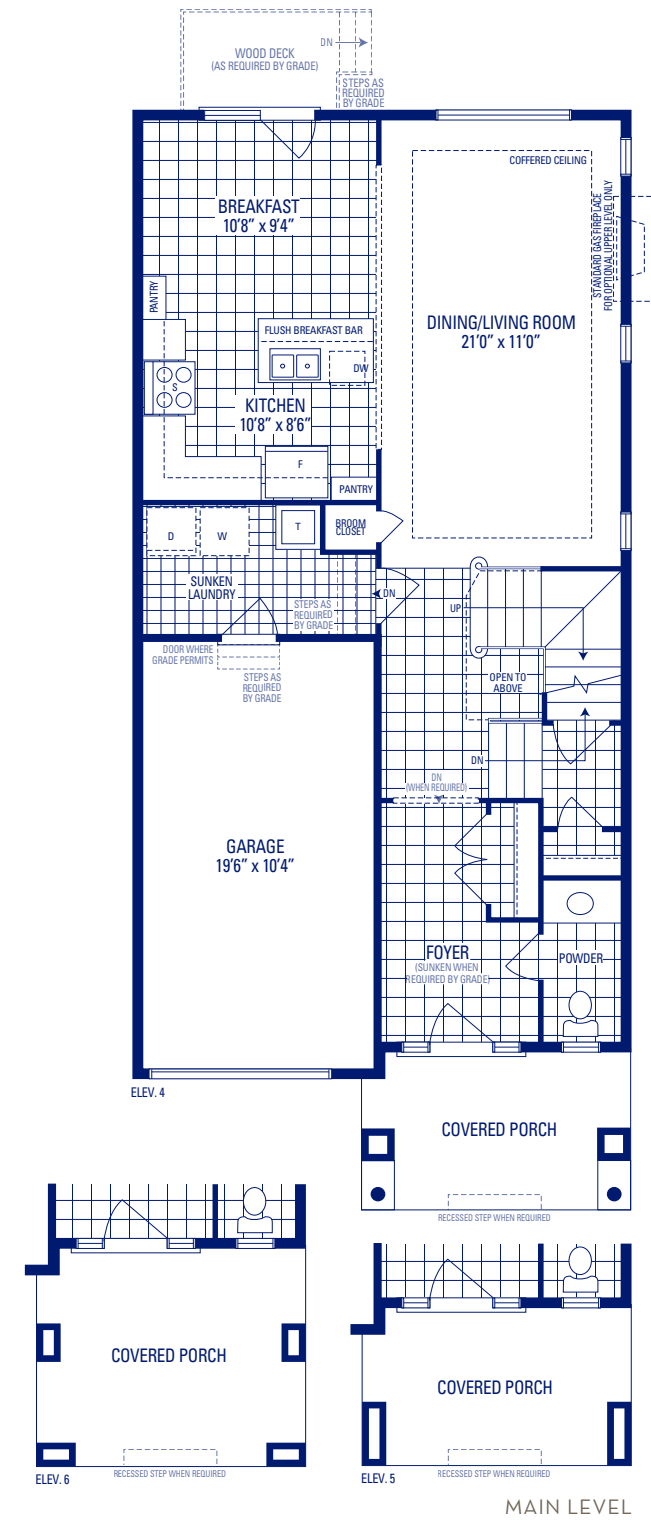


ELEVATION 2

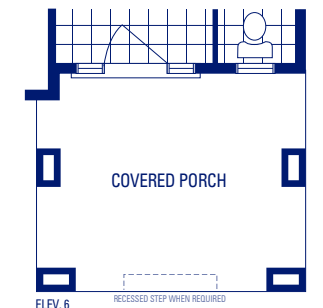
HERITAGE 12 • ELEVATION 2

ELEVATION 5

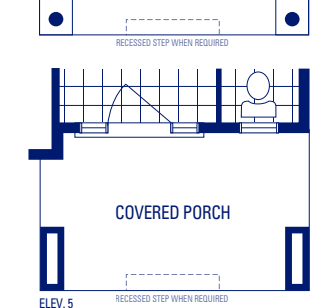
HERITAGE 3 • ELEVATION 5



ELEV 4

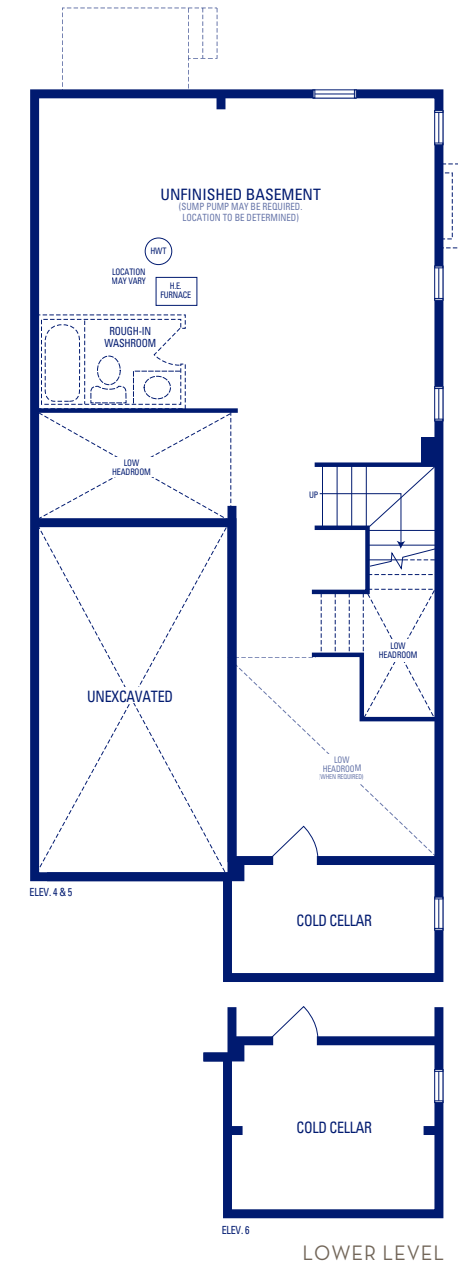


ELEV 6



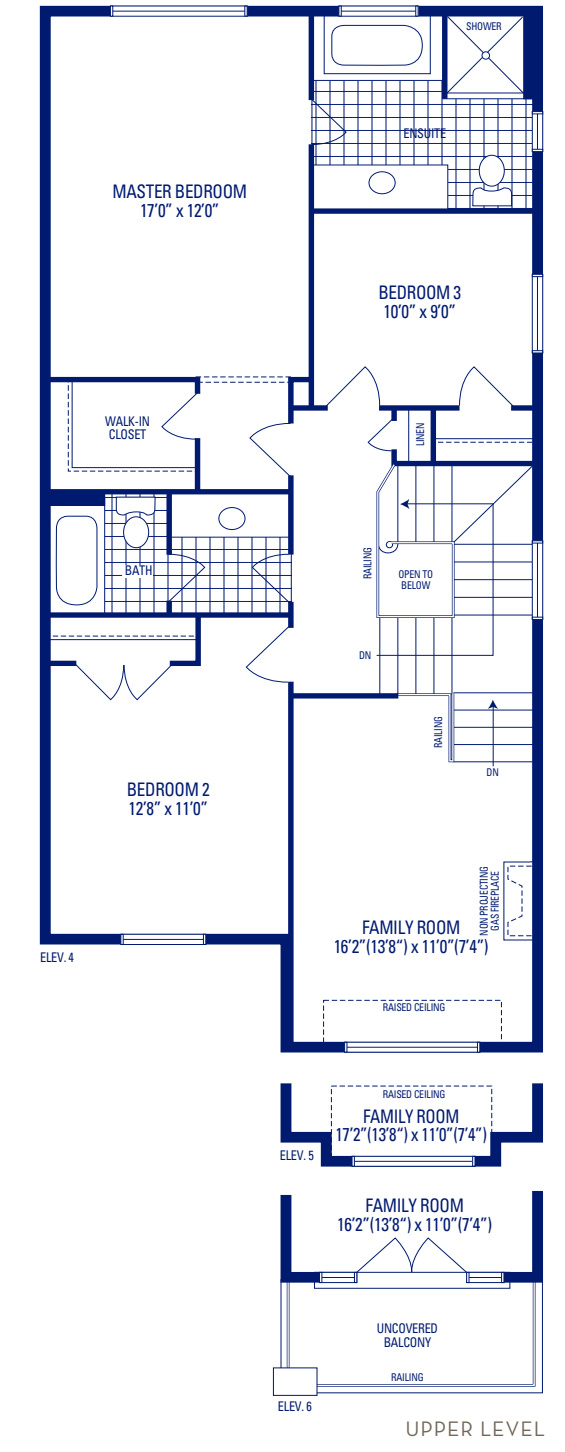
ELEV 5

MAIN LEVEL

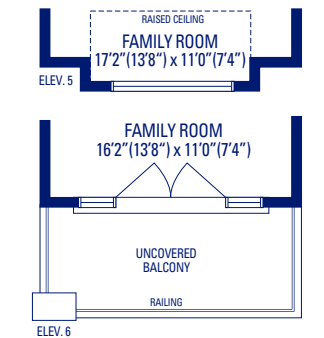


ELEV 4&5

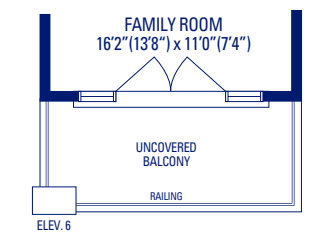
LOWER LEVEL



ELEV 4

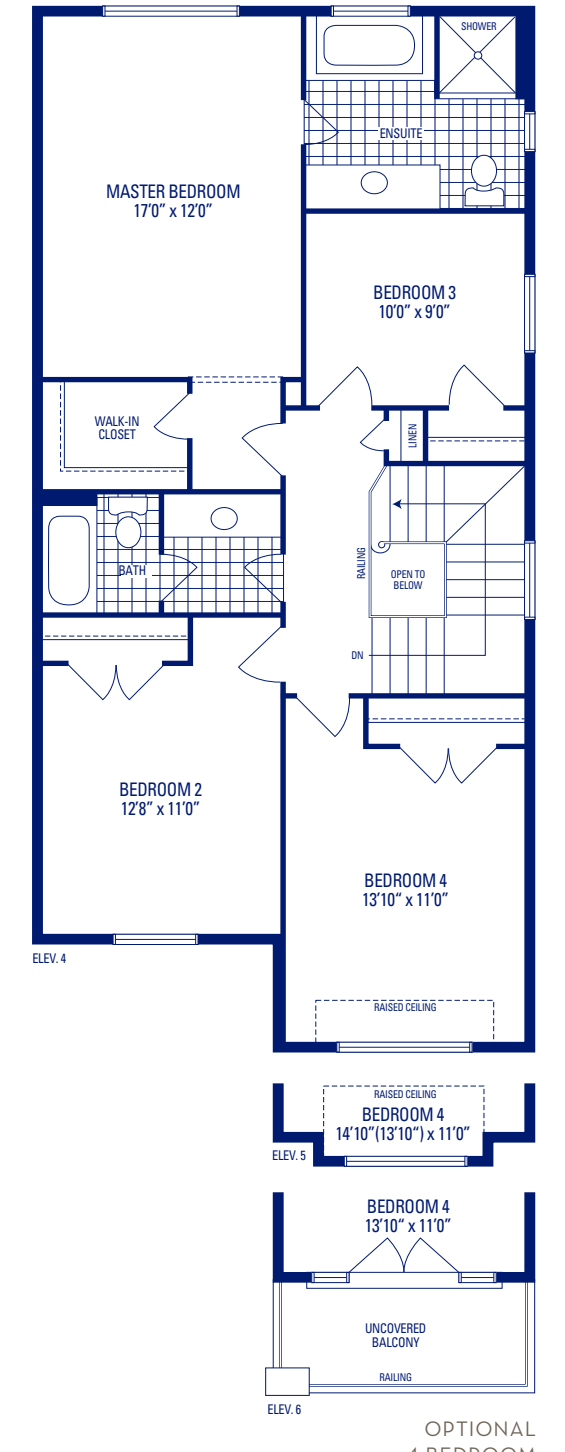


ELEV 5

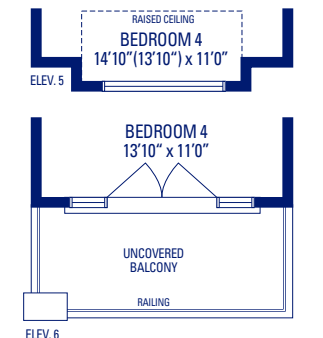


ELEV 6

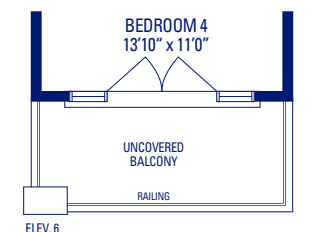
UPPER LEVEL



ELEV 4



ELEV 5



ELEV 6

OPTIONAL 4 BEDROOM UPPER LEVEL

Main exterior building materials include: Elev. 4 • Brick, Elev. 5 • Cultured Stone + Brick, Elev. 6 • Cultured Stone + Brick + Painted Wood Products
 Buckingham Gate, Ph. III • 27'10" • May 2020
 NOTE: Orientation of home may be reversed and purchaser agrees to accept the same. Unit setback and roofline may vary due to siting. Steps may vary at any exterior entrance ways due to grading variance. All dimensions are approximate only and subject to change without notice. Actual usable floor space may vary from stated floor area. All renderings are artist's concept, specifications, architectural and mechanical detailing are subject to minor modifications. Mechanical wall encroachments may be required into finished rooms and garage spaces. E.&O.E.

HERITAGE 3

ELEVATION 4 • 1,980 SQ.FT. | ELEVATION 5 • 1,989 SQ.FT. | ELEVATION 6 • 1,980 SQ.FT.