

LIBERTY SERIES • Block 4

FRONT - FACING INTERSECTION



FRONT - FACING DUNDAS STREET EAST



LIBERTY 7 MOD.
ELEV. 2 • TH-26
2,317 Sq.Ft.

LIBERTY 1
ELEV. 2 • TH-25
1,943 Sq.Ft.

LIBERTY 1
ELEV. 2 • TH-24
1,943 Sq.Ft.

LIBERTY 5
ELEV. 2 • TH-23
2,828 Sq.Ft.

TH-22

FRONT - FACING MAX KHAN BOULEVARD

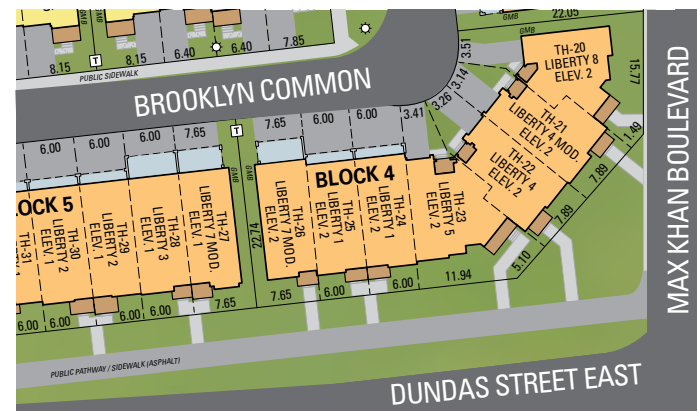


TH-21

LIBERTY 8
ELEV. 2 • TH-20
2,346 Sq.Ft.

LIBERTY 4
ELEV. 2 • TH-22
2,249 Sq.Ft.

LIBERTY 4 MOD.
ELEV. 2 • TH-21
2,289 Sq.Ft.



BLOCK 4 SITE PLAN

Foxcotte • 19'8" • March 2020

Unit setback and roofline may vary due to siting. Steps may vary at any exterior entrance ways due to grading variance. All dimensions are approximate only and subject to change without notice. Actual usable floor space may vary from stated floor area. All renderings are artist's concept, specifications, architectural and mechanical detailing are subject to minor modifications. Site plan not to scale and provided for general information only. All details should be confirmed with sales representative and/or municipality. Distances shown are in metres and can be converted to feet by dividing by 0.3048. E.&O.E.

LIBERTY SERIES • Block 4

REAR - FACING BROOKLYN COMMON



LIBERTY 8
ELEV. 2 • TH-20
2,346 Sq.Ft.

LIBERTY 4 MOD.
ELEV. 2 • TH-21
2,289 Sq.Ft.

LIBERTY 4
ELEV. 2 • TH-22
2,249 Sq.Ft.

LIBERTY 5
ELEV. 2 • TH-23
2,828 Sq.Ft.

LIBERTY 1
ELEV. 2 • TH-24
1,943 Sq.Ft.

LIBERTY 1
ELEV. 2 • TH-25
1,943 Sq.Ft.

LIBERTY 7 MOD.
ELEV. 2 • TH-26
2,317 Sq.Ft.

Foxcotte • 19'8" • March 2020

Unit setback and roofline may vary due to siting. Steps may vary at any exterior entrance ways due to grading variance. All dimensions are approximate only and subject to change without notice. Actual usable floor space may vary from stated floor area. All renderings are artist's concept, specifications, architectural and mechanical detailing are subject to minor modifications. Site plan not to scale and provided for general information only. All details should be confirmed with sales representative and/or municipality. Distances shown are in metres and can be converted to feet by dividing by 0.3048. E.&O.E.

LIBERTY SERIES • Block 14

FRONT - FACING MAX KHAN BOULEVARD



LIBERTY 6

ELEV. 2 • TH-106
2,343 Sq.Ft.

LIBERTY 1

ELEV. 2 • TH-105
1,943 Sq.Ft.

LIBERTY 2

ELEV. 2 • TH-104
2,041 Sq.Ft.

LIBERTY 3

ELEV. 2 • TH-103
2,275 Sq.Ft.

LIBERTY 7

ELEV. 2 • TH-102
2,317 Sq.Ft.

Foxcotte • 19'8" • March 2020

Unit setback and roofline may vary due to siting. Steps may vary at any exterior entrance ways due to grading variance. All dimensions are approximate only and subject to change without notice. Actual usable floor space may vary from stated floor area. All renderings are artist's concept, specifications, architectural and mechanical detailing are subject to minor modifications. Site plan not to scale and provided for general information only. All details should be confirmed with sales representative and/or municipality. Distances shown are in metres and can be converted to feet by dividing by 0.3048. E.&O.E.

LIBERTY SERIES • Block 14



REAR - FACING MANHATTAN COMMON

LIBERTY 7

ELEV. 2 • TH-102
2,317 Sq.Ft.

LIBERTY 3

ELEV. 2 • TH-103
2,275 Sq.Ft.

LIBERTY 2

ELEV. 2 • TH-104
2,041 Sq.Ft.

LIBERTY 1

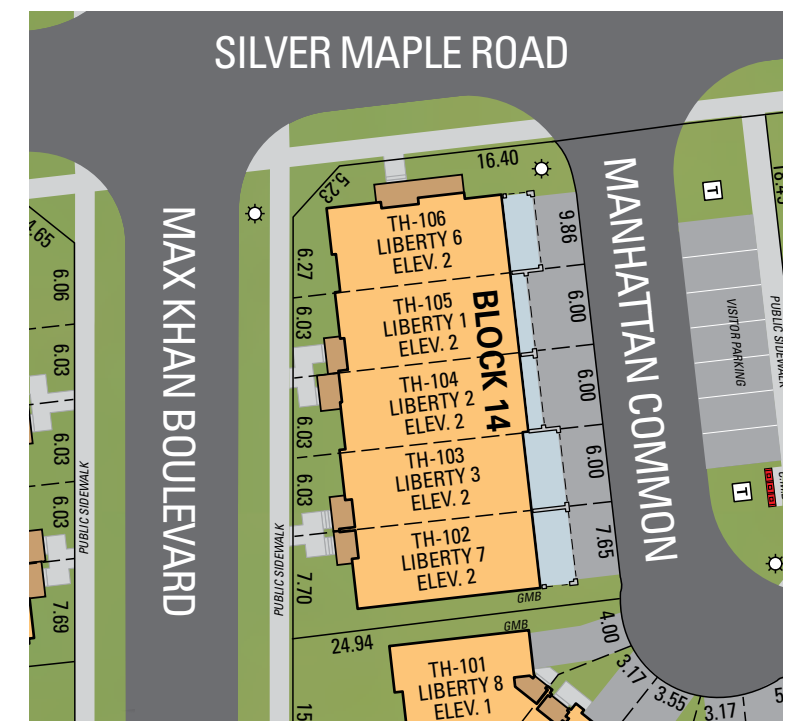
ELEV. 2 • TH-105
1,943 Sq.Ft.

LIBERTY 6

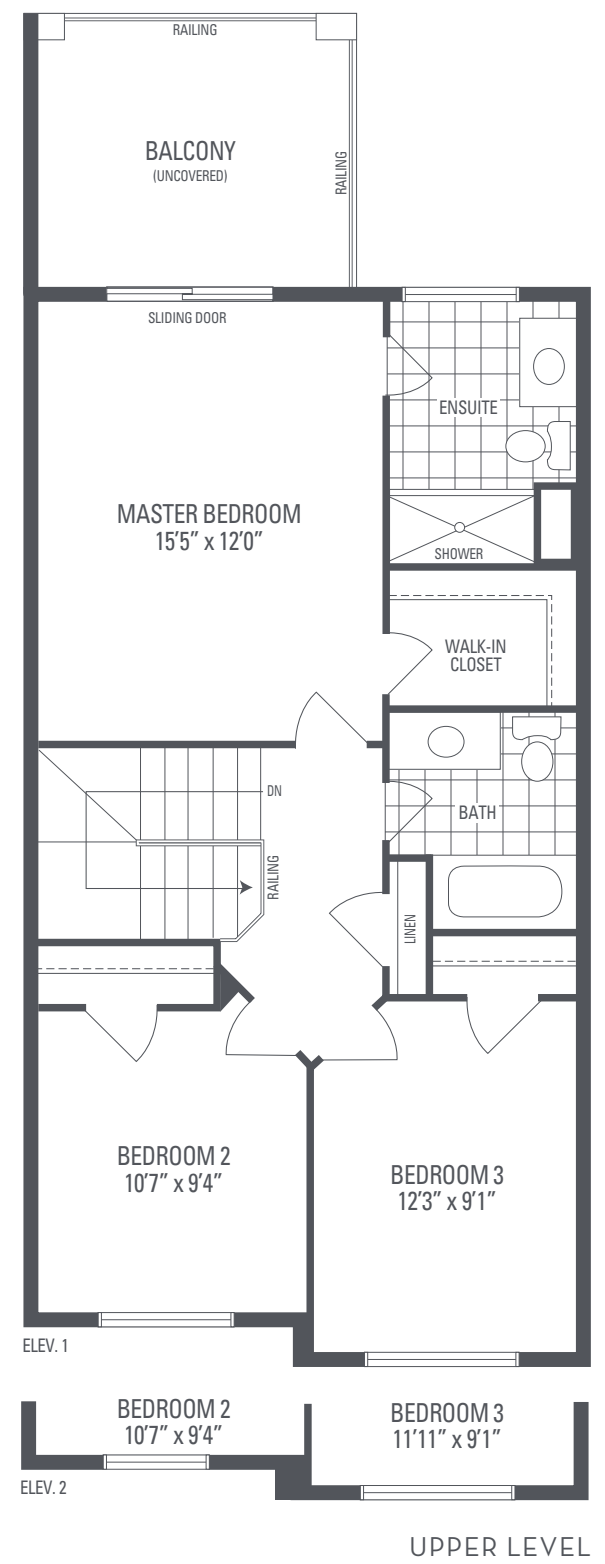
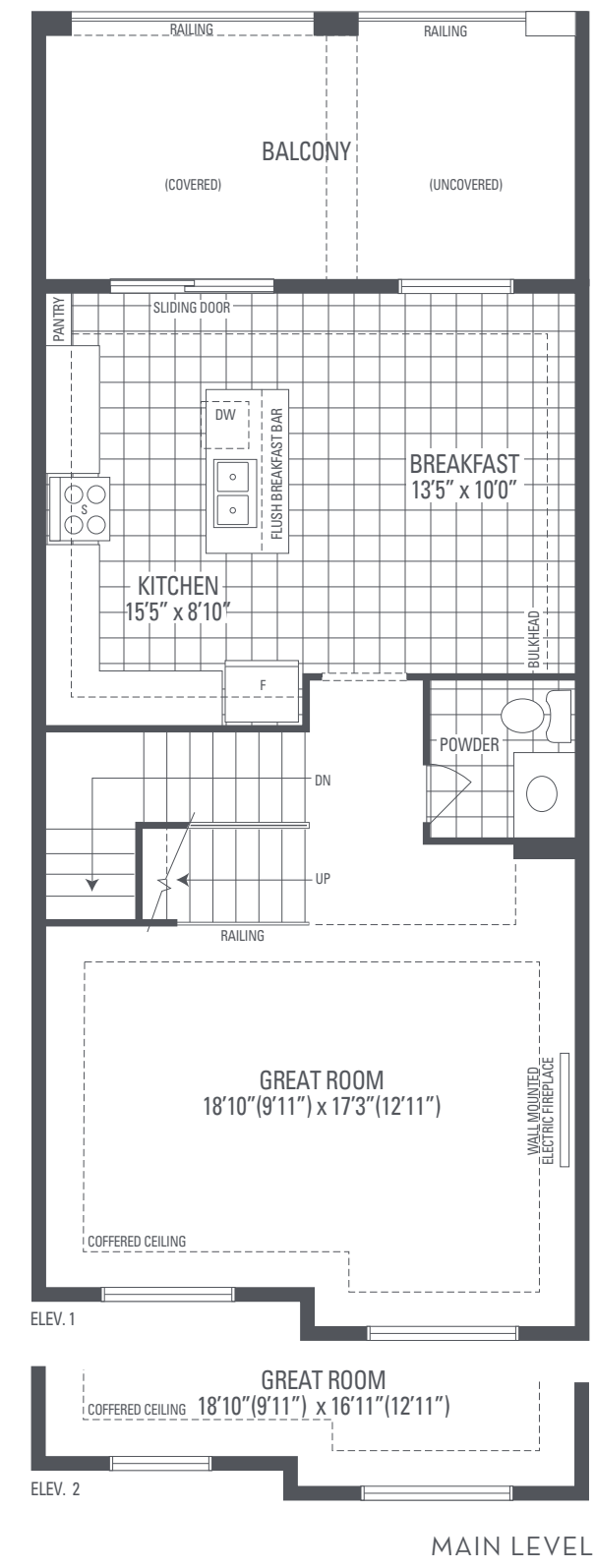
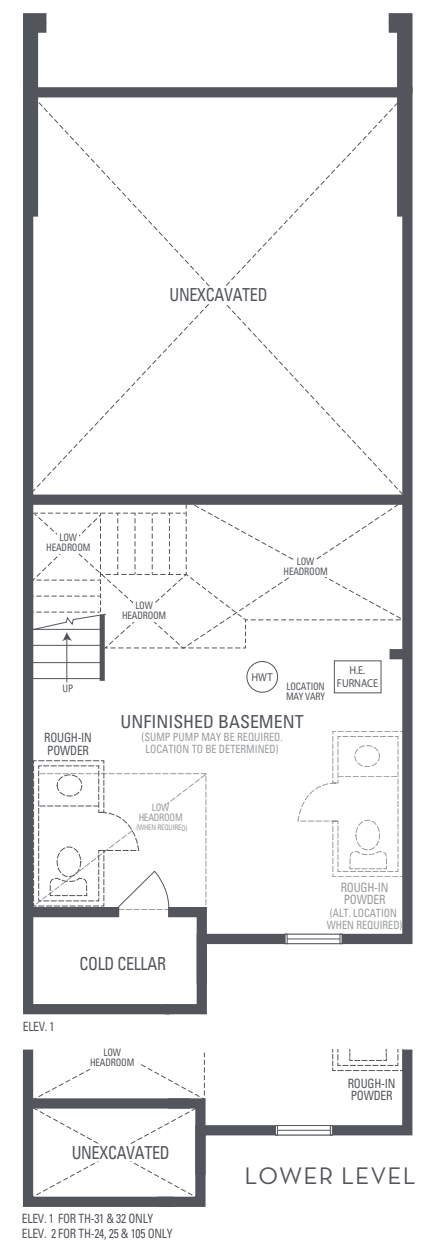
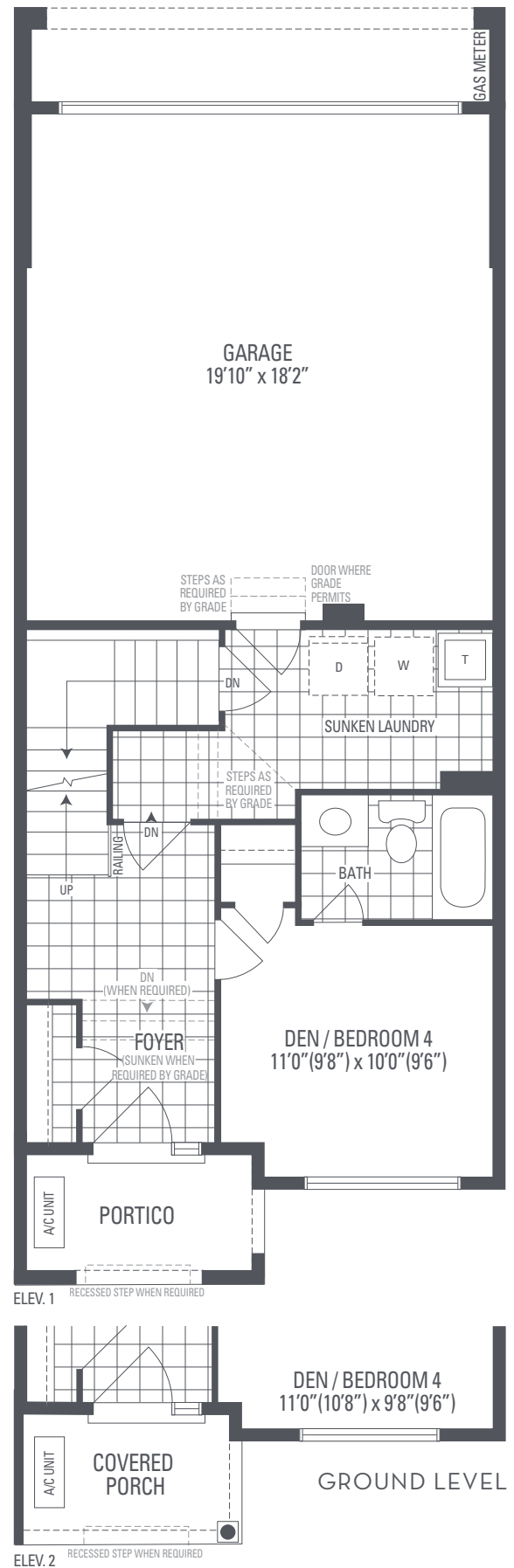
ELEV. 2 • TH-106
2,343 Sq.Ft.



LIBERTY 6 FLANKAGE
ELEV. 2 • TH-106 | 2,343 Sq.Ft.



BLOCK 14 SITE PLAN



LIBERTY 1

Elevation 1 • 1,952 sq.ft. | Elevation 2 • 1,943 sq.ft.

Main exterior building materials include: Elev. 1 • Cultured Stone + Brick, Elev. 2 • Cultured Stone + Applied Stucco Foxcotte • 19'8" • March 2020

NOTE: Orientation of home may be reversed and purchaser agrees to accept the same. Unit setback and roofline may vary due to siting. Steps may vary at any exterior entrance ways due to grading variance. All dimensions are approximate only and subject to change without notice. Actual usable floor space may vary from stated floor area. All renderings are artist's concept, specifications, architectural and mechanical detailing are subject to minor modifications. Mechanical wall encroachments may be required into finished rooms and garage spaces. E.&O.E.