

OAKLEY SERIES • Block 2



NORTH - FACING SILVER MAPLE ROAD



OAKLEY 4 FLANKAGE
ELEV. 2 • TH-14

OAKLEY 4 FLANKAGE
ELEV. 2 • TH-10

OAKLEY 4
ELEV. 2 • TH-10
1,860 Sq.Ft.

OAKLEY 3
ELEV. 2 • TH-9
1,968 Sq.Ft.

OAKLEY 1
ELEV. 2 • TH-8
1,780 Sq.Ft.

OAKLEY 5
ELEV. 2 • TH-7
1,975 Sq.Ft.

Foxcote • 21' • March 2020

Unit setback and roofline may vary due to siting. Steps may vary at any exterior entrance ways due to grading variance. All dimensions are approximate only and subject to change without notice. Actual usable floor space may vary from stated floor area. All renderings are artist's concept, specifications, architectural and mechanical detailing are subject to minor modifications. Site plan not to scale and provided for general information only. All details should be confirmed with sales representative and/or municipality. Distances shown are in metres and can be converted to feet by dividing by 0.3048. E.&O.E.

OAKLEY SERIES • Block 2

SOUTH - FACING BROOKLYN COMMON



BLOCK 2 SITE PLAN

OAKLEY 5
ELEV. 2 • TH-11
1,975 Sq.Ft.

OAKLEY 1
ELEV. 2 • TH-12
1,780 Sq.Ft.

OAKLEY 3
ELEV. 2 • TH-13
1,968 Sq.Ft.

OAKLEY 4
ELEV. 2 • TH-14
1,860 Sq.Ft.

Foxcotte • 21' • March 2020

Unit setback and roofline may vary due to siting. Steps may vary at any exterior entrance ways due to grading variance. All dimensions are approximate only and subject to change without notice. Actual usable floor space may vary from stated floor area. All renderings are artist's concept, specifications, architectural and mechanical detailing are subject to minor modifications. Site plan not to scale and provided for general information only. All details should be confirmed with sales representative and/or municipality. Distances shown are in metres and can be converted to feet by dividing by 0.3048. E.&O.E.

OAKLEY SERIES • Block 6

NORTH - FACING SILVER MAPLE ROAD



OAKLEY 5
ELEV. 2 • TH-40
1,975 Sq.Ft.

OAKLEY 1
ELEV. 2 • TH-39
1,780 Sq.Ft.

OAKLEY 3
ELEV. 2 • TH-38
1,968 Sq.Ft.

OAKLEY 3
ELEV. 2 • TH-37
1,968 Sq.Ft.

OAKLEY 2
ELEV. 2 • TH-36
1,870 Sq.Ft.

OAKLEY 4
ELEV. 2 • TH-35
1,860 Sq.Ft.

Foxcote • 21' • March 2020

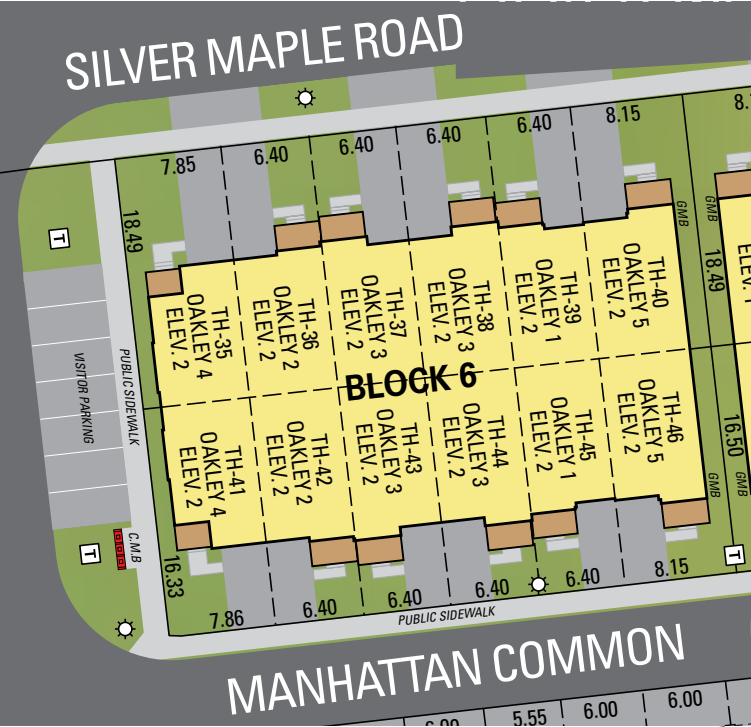
Unit setback and roofline may vary due to siting. Steps may vary at any exterior entrance ways due to grading variance. All dimensions are approximate only and subject to change without notice. Actual usable floor space may vary from stated floor area. All renderings are artist's concept, specifications, architectural and mechanical detailing are subject to minor modifications. Site plan not to scale and provided for general information only. All details should be confirmed with sales representative and/or municipality. Distances shown are in metres and can be converted to feet by dividing by 0.3048. E.&O.E.

OAKLEY SERIES • Block 6



OAKLEY 4 FLANKAGE
ELEV. 2 • TH-35

OAKLEY 4 FLANKAGE
ELEV. 2 • TH-41



BLOCK 6 SITE PLAN

OAKLEY 4
ELEV. 2 • TH-41
1,860 Sq.Ft.

OAKLEY 2
ELEV. 2 • TH-42
1,870 Sq.Ft.

OAKLEY 3
ELEV. 2 • TH-43
1,968 Sq.Ft.

OAKLEY 3
ELEV. 2 • TH-44
1,968 Sq.Ft.

OAKLEY 1
ELEV. 2 • TH-45
1,780 Sq.Ft.

OAKLEY 5
ELEV. 2 • TH-46
1,975 Sq.Ft.

OAKLEY SERIES • Block 8

NORTH - FACING SILVER MAPLE ROAD



OAKLEY 4
ELEV. 2 • TH-62
1,860 Sq.Ft.

OAKLEY 2
ELEV. 2 • TH-61
1,870 Sq.Ft.

OAKLEY 3
ELEV. 2 • TH-60
1,968 Sq.Ft.

OAKLEY 3
ELEV. 2 • TH-59
1,968 Sq.Ft.

OAKLEY 1
ELEV. 2 • TH-58
1,780 Sq.Ft.

OAKLEY 5
ELEV. 2 • TH-57
1,975 Sq.Ft.

Foxcote • 21' • March 2020

Unit setback and roofline may vary due to siting. Steps may vary at any exterior entrance ways due to grading variance. All dimensions are approximate only and subject to change without notice. Actual usable floor space may vary from stated floor area. All renderings are artist's concept, specifications, architectural and mechanical detailing are subject to minor modifications. Site plan not to scale and provided for general information only. All details should be confirmed with sales representative and/or municipality. Distances shown are in metres and can be converted to feet by dividing by 0.3048. E.&O.E.

OAKLEY SERIES • Block 8

SOUTH - FACING MANHATTAN COMMON



OAKLEY 4 FLANKAGE
ELEV. 2 • TH-68

OAKLEY 4 FLANKAGE
ELEV. 2 • TH-62

OAKLEY 5
ELEV. 2 • TH-63
1,975 Sq.Ft.

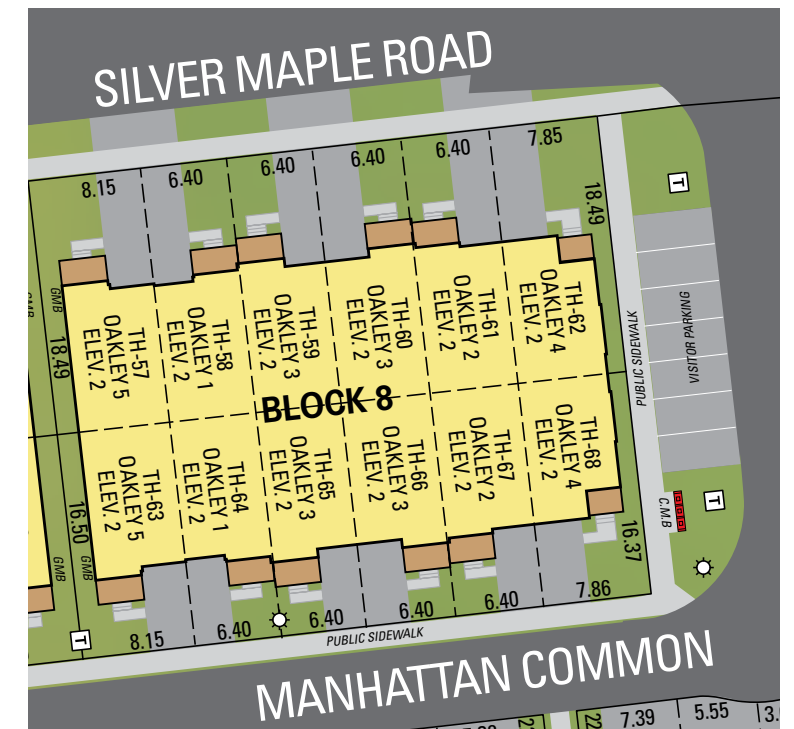
OAKLEY 1
ELEV. 2 • TH-64
1,780 Sq.Ft.

OAKLEY 3
ELEV. 2 • TH-65
1,968 Sq.Ft.

OAKLEY 3
ELEV. 2 • TH-66
1,968 Sq.Ft.

OAKLEY 2
ELEV. 2 • TH-67
1,870 Sq.Ft.

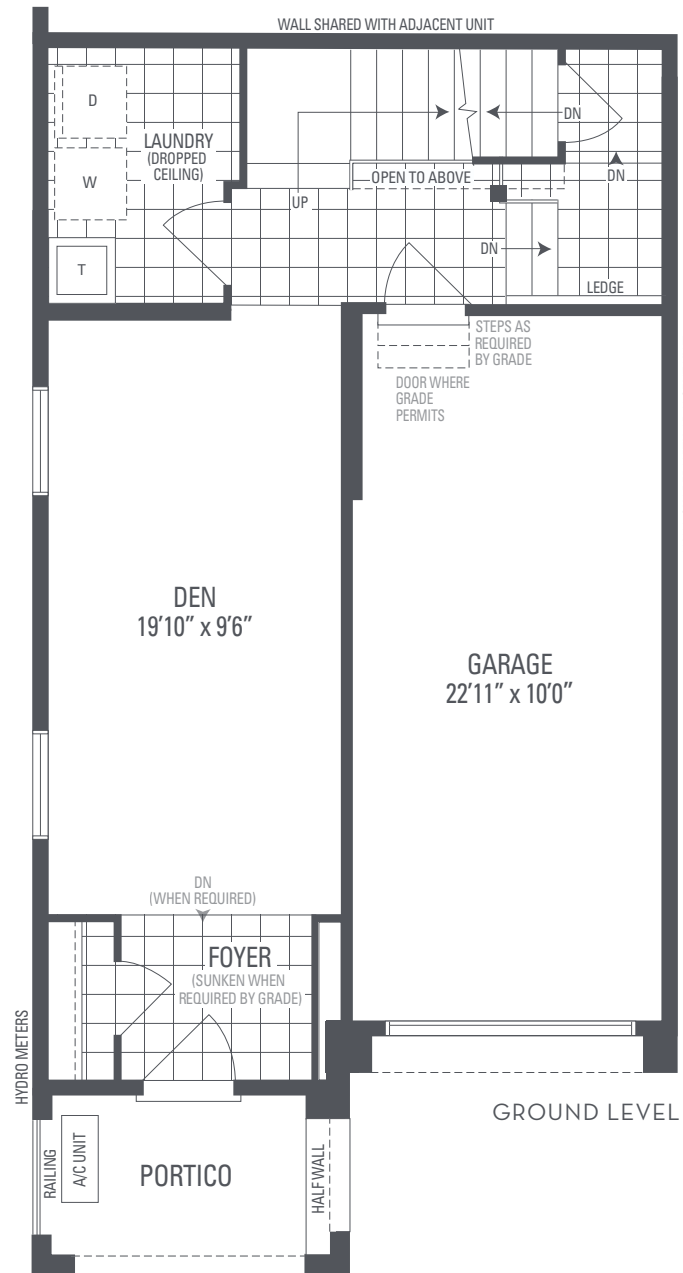
OAKLEY 4
ELEV. 2 • TH-68
1,860 Sq.Ft.



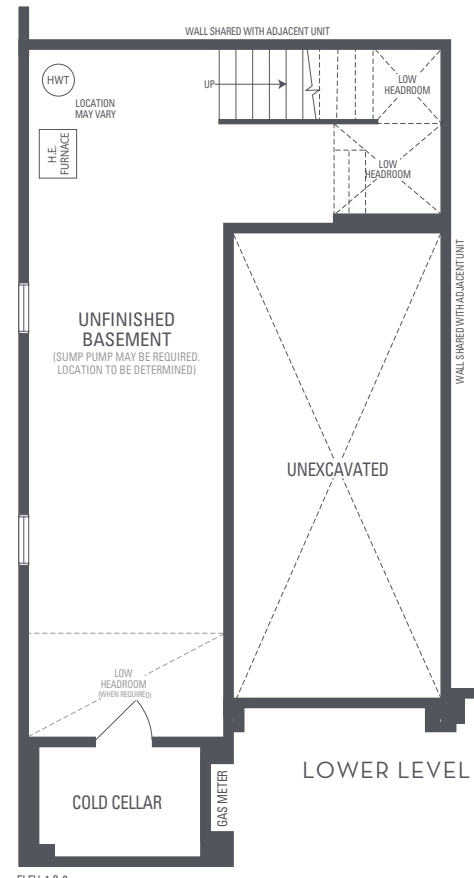
BLOCK 8 SITE PLAN

Foxcotte • 21' • March 2020

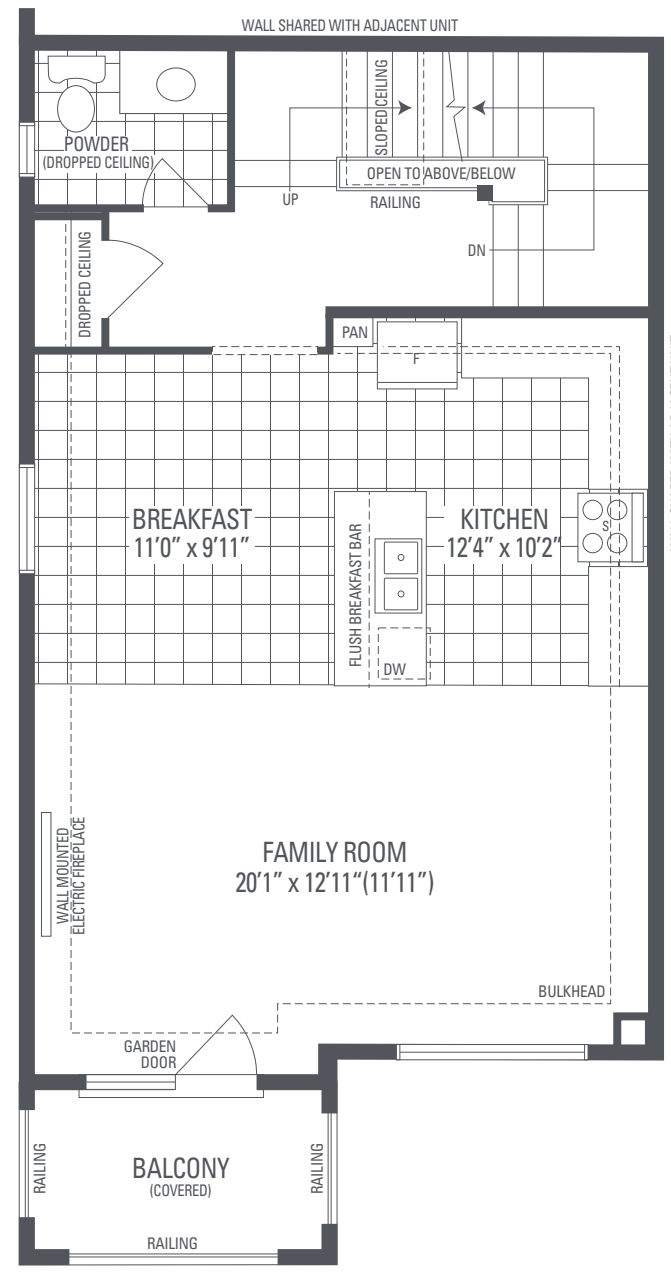
Unit setback and roofline may vary due to siting. Steps may vary at any exterior entrance ways due to grading variance. All dimensions are approximate only and subject to change without notice. Actual usable floor space may vary from stated floor area. All renderings are artist's concept, specifications, architectural and mechanical detailing are subject to minor modifications. Site plan not to scale and provided for general information only. All details should be confirmed with sales representative and/or municipality. Distances shown are in metres and can be converted to feet by dividing by 0.3048. E.&O.E.



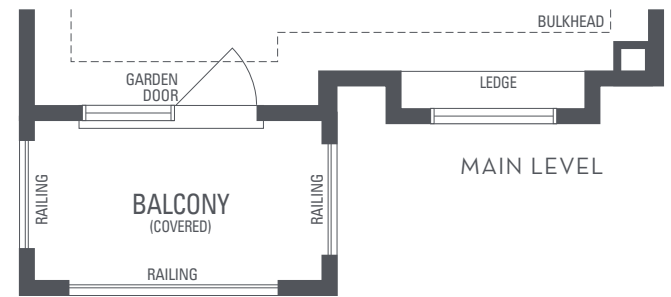
ELEV. 1 & 2



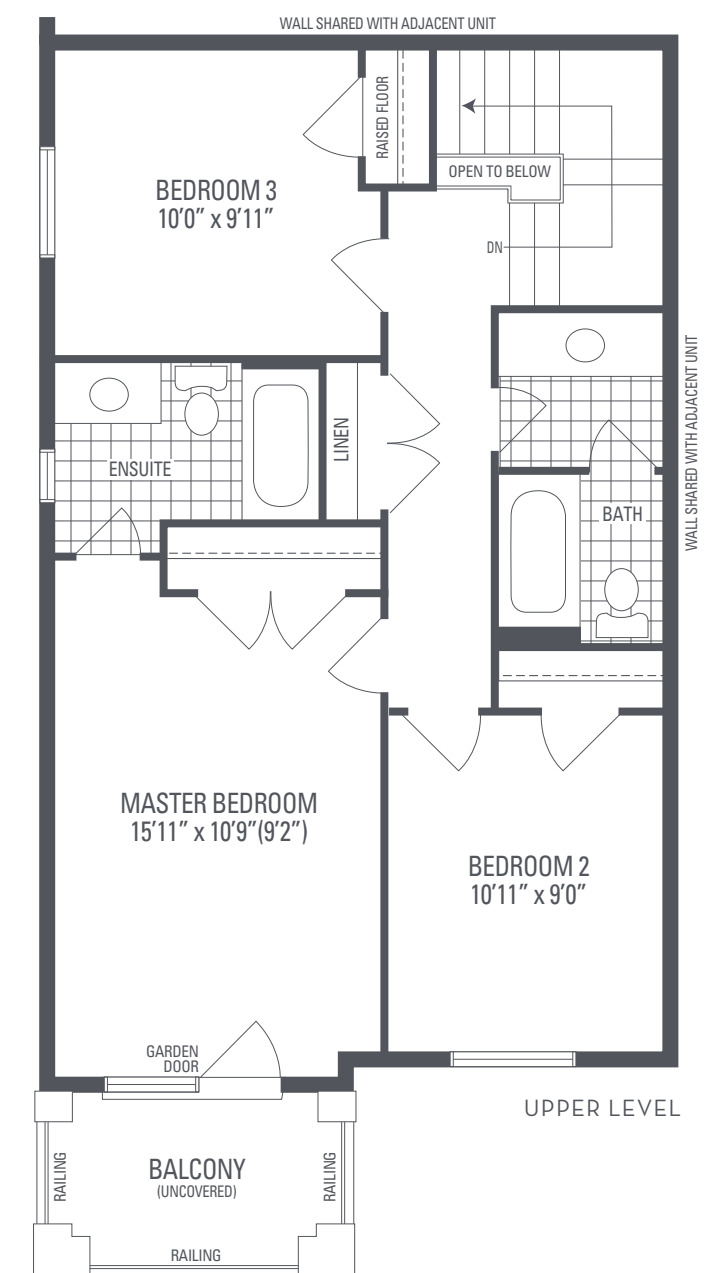
ELEV. 1 & 2



ELEV. 1



ELEV. 2



ELEV. 1 & 2

OAKLEY 5

Elevation 1 • 1,975 sq.ft. | Elevation 2 • 1,975 sq.ft.

Main exterior building materials include: Elev. 1 • Cultured Stone + Brick, Elev. 2 • Cultured Stone + Brick + Applied Stucco Foxcotte • 21' • March 2020

NOTE: Orientation of home may be reversed and purchaser agrees to accept the same. Unit setback and roofline may vary due to siting. Steps may vary at any exterior entrance ways due to grading variance. All dimensions are approximate only and subject to change without notice. Actual usable floor space may vary from stated floor area. All renderings are artist's concept, specifications, architectural and mechanical detailing are subject to minor modifications. Mechanical wall encroachments may be required into finished rooms and garage spaces. E.&O.E.