

BLOCK 1 • FRONT ELEVATION • Arrow Court



PEARL 10
ELEV. 2 • Part 10
2,266 Sq.Ft.

PEARL 1
ELEV. 1 • Part 9
2,160 Sq.Ft.

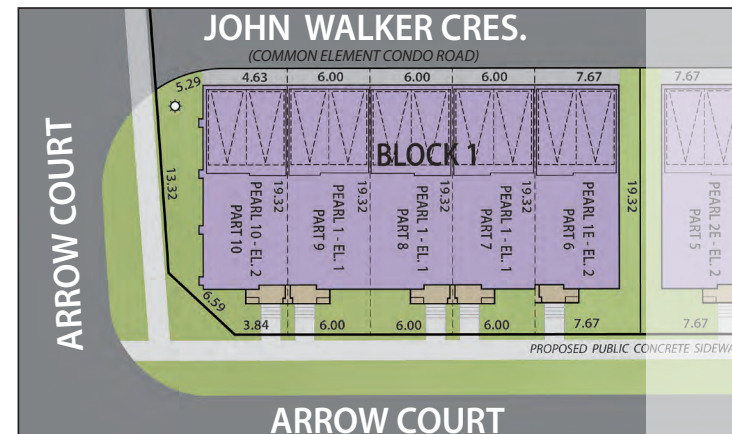
PEARL 1
ELEV. 1 • Part 8
2,160 Sq.Ft.

PEARL 1
ELEV. 1 • Part 7
2,160 Sq.Ft.

PEARL 1E
ELEV. 2 • Part 6
2,203 Sq.Ft.



PEARL 10 • ELEV. 2 • Part 10 END ELEVATION



BLOCK 1 • SITE PLAN

Main exterior building materials for front include: Elev. 1 & 2 • Cultured Stone + Brick + Prefinished Aluminum Siding

Loggerhead Plains Estates Corp. • 19'8" Condo Towns • March 2026 Unit setback and roofline may vary due to siting. Steps may vary at any exterior entrance ways due to grading variance. All dimensions are approximate only and subject to change without notice. Actual usable floor space may vary from stated floor area. All renderings are artist's concept, specifications, architectural and mechanical detailing are subject to minor modifications. Site plan not to scale and provided for general information only. All details should be confirmed with sales representative and/or municipality. Distances shown are in metres and can be converted to feet by dividing by 0.3048. E.&O.E.

BLOCK 2 • REAR ELEVATION • John Walker Crescent



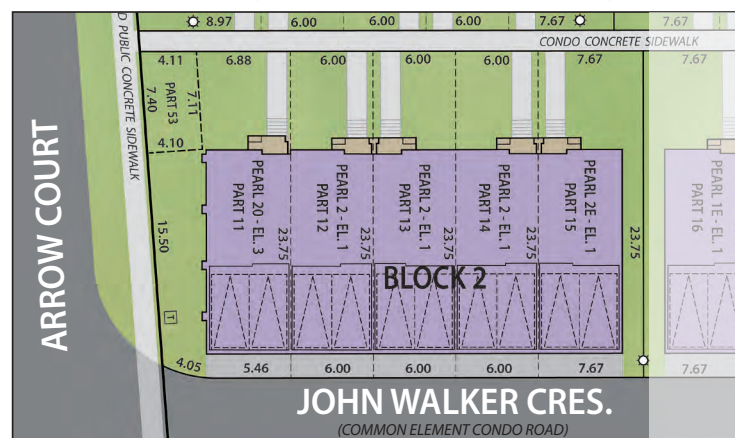
PEARL 20
ELEV. 3 • Part 11
2,304 Sq.Ft.

PEARL 2
ELEV. 1 • Part 12
2,197 Sq.Ft.

PEARL 2
ELEV. 1 • Part 13
2,197 Sq.Ft.

PEARL 2
ELEV. 1 • Part 14
2,197 Sq.Ft.

PEARL 2E
ELEV. 1 • Part 15
2,243 Sq.Ft.



BLOCK 2 • SITE PLAN



PEARL 2E • ELEV. 1 • Part 15 END ELEVATION

Main exterior building materials for front include: Elev. 1 & 3 • Cultured Stone + Brick

BLOCK 2 • FRONT ELEVATION



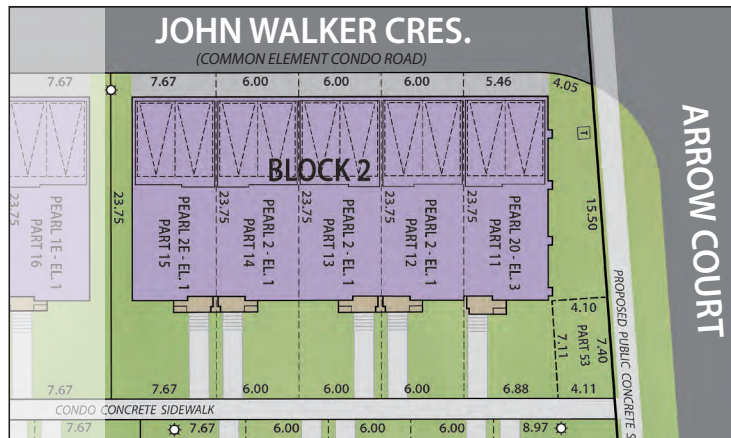
PEARL 2E
ELEV. 1 • Part 15
2,243 Sq.Ft.

PEARL 2
ELEV. 1 • Part 14
2,197 Sq.Ft.

PEARL 2
ELEV. 1 • Part 13
2,197 Sq.Ft.

PEARL 2
ELEV. 1 • Part 12
2,197 Sq.Ft.

PEARL 20
ELEV. 3 • Part 11
2,304 Sq.Ft.



BLOCK 2 • SITE PLAN



PEARL 20 • ELEV. 3 • Part 11 END ELEVATION

Main exterior building materials for front include: Elev. 1 & 3 • Cultured Stone + Brick

BLOCK 3 • REAR ELEVATION • John Walker Crescent



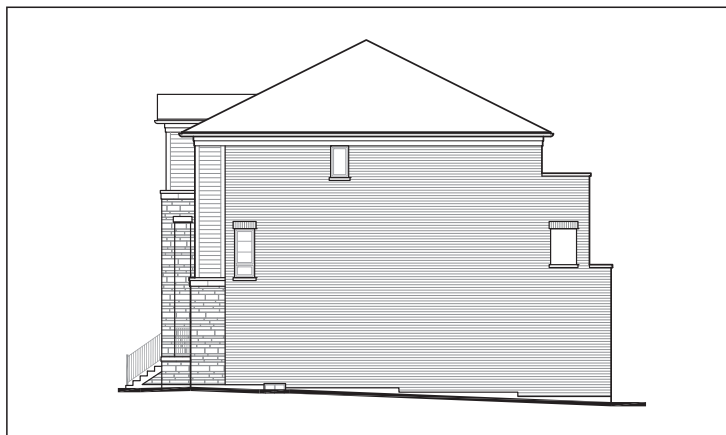
PEARL 1E
ELEV. 2 • Part 24
2,203 Sq.Ft.

PEARL 1
ELEV. 1 • Part 25
2,160 Sq.Ft.

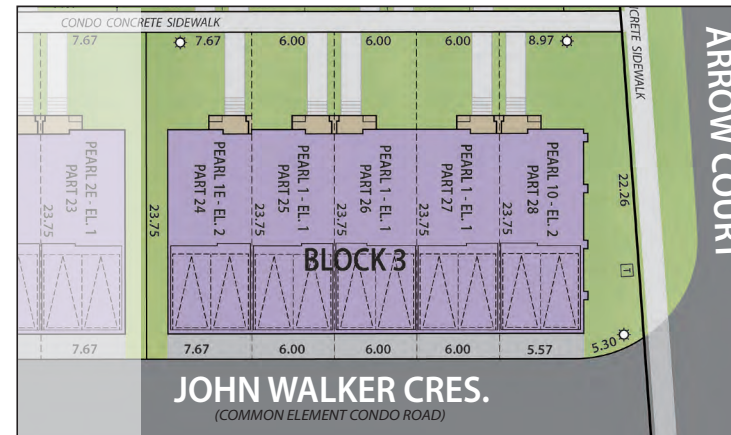
PEARL 1
ELEV. 1 • Part 26
2,160 Sq.Ft.

PEARL 1
ELEV. 1 • Part 27
2,160 Sq.Ft.

PEARL 10
ELEV. 2 • Part 28
2,266 Sq.Ft.



PEARL 1E • ELEV. 2 • Part 24 END ELEVATION



BLOCK 3 • SITE PLAN

Main exterior building materials for front include: Elev. 1 & 2 • Cultured Stone + Brick + Prefinished Aluminum Siding

Loggerhead Plains Estates Corp. • 19'8" Condo Towns • March 2026 Unit setback and roofline may vary due to siting. Steps may vary at any exterior entrance ways due to grading variance. All dimensions are approximate only and subject to change without notice. Actual usable floor space may vary from stated floor area. All renderings are artist's concept, specifications, architectural and mechanical detailing are subject to minor modifications. Site plan not to scale and provided for general information only. All details should be confirmed with sales representative and/or municipality. Distances shown are in metres and can be converted to feet by dividing by 0.3048. E.&O.E.

BLOCK 4 • REAR ELEVATION • John Walker Crescent



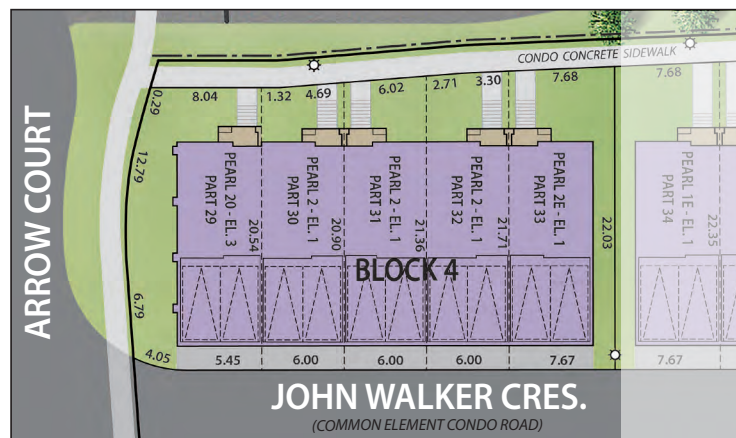
PEARL 20
ELEV. 3 • Part 29
2,304 Sq.Ft.

PEARL 2
ELEV. 1 • Part 30
2,197 Sq.Ft.

PEARL 2
ELEV. 1 • Part 31
2,197 Sq.Ft.

PEARL 2
ELEV. 1 • Part 32
2,197 Sq.Ft.

PEARL 2E
ELEV. 1 • Part 33
2,243 Sq.Ft.



BLOCK 4 • SITE PLAN



PEARL 2E • ELEV. 1 • Part 33 END ELEVATION

Main exterior building materials for front include: Elev. 1 & 3 • Cultured Stone + Brick

BLOCK 4 • FRONT ELEVATION



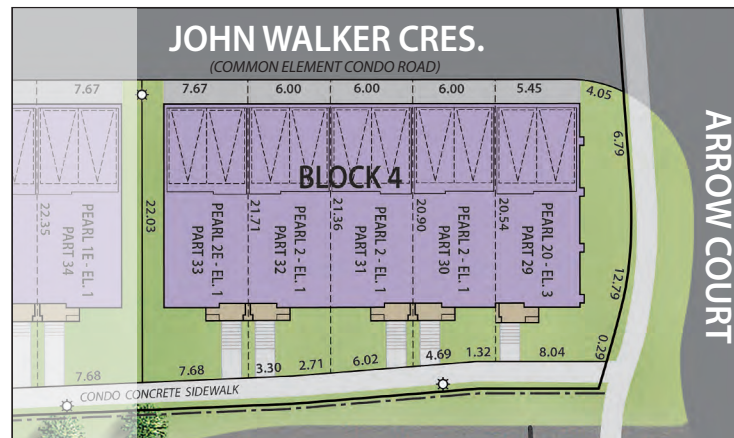
PEARL 2E
ELEV. 1 • Part 33
2,243 Sq.Ft.

PEARL 2
ELEV. 1 • Part 32
2,197 Sq.Ft.

PEARL 2
ELEV. 1 • Part 31
2,197 Sq.Ft.

PEARL 2
ELEV. 1 • Part 30
2,197 Sq.Ft.

PEARL 20
ELEV. 3 • Part 29
2,304 Sq.Ft.



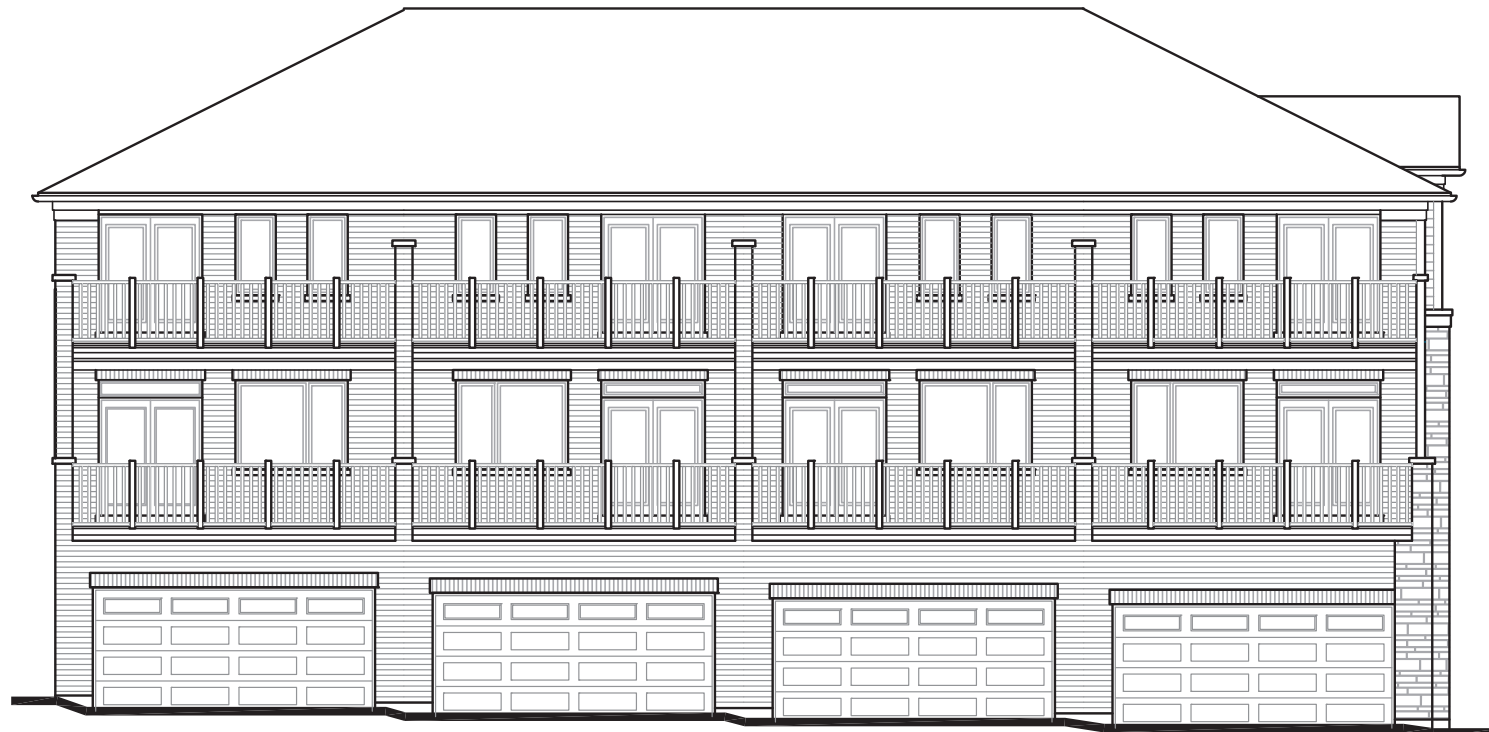
BLOCK 4 • SITE PLAN



PEARL 20 • ELEV. 3 • Part 29 END ELEVATION

Main exterior building materials for front include: Elev. 1 & 3 • Cultured Stone + Brick

BLOCK 5 • REAR ELEVATION • John Walker Crescent

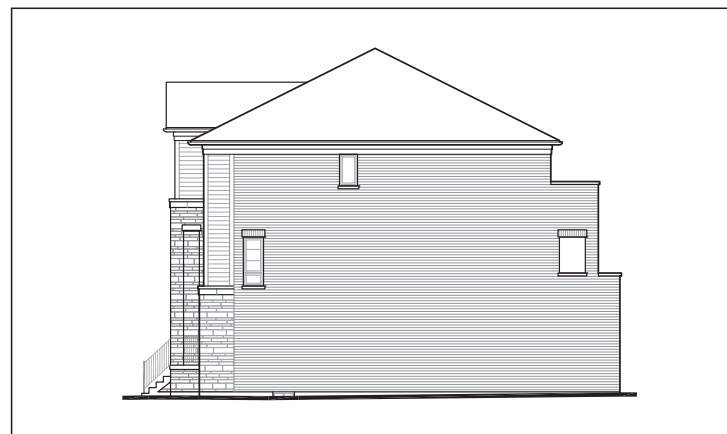


PEARL 1E
ELEV. 1 • Part 34
2,203 Sq.Ft.

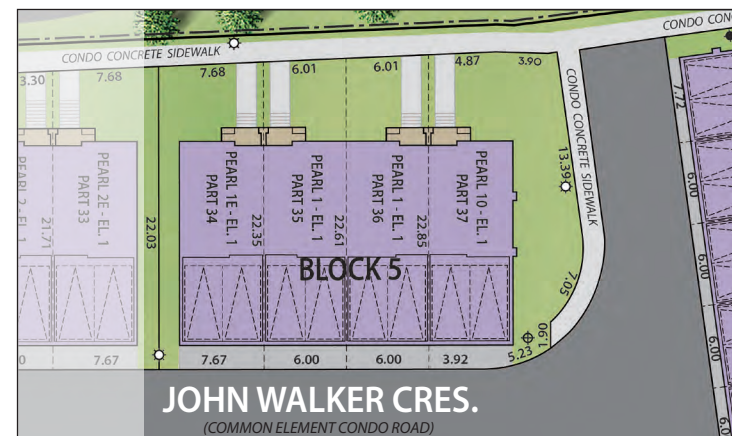
PEARL 1
ELEV. 1 • Part 35
2,160 Sq.Ft.

PEARL 1
ELEV. 1 • Part 36
2,160 Sq.Ft.

PEARL 10
ELEV. 1 • Part 37
2,230 Sq.Ft.



PEARL 1E • ELEV. 1 • Part 34 END ELEVATION



BLOCK 5 • SITE PLAN

Main exterior building materials for front include: Elev. 1 • Cultured Stone + Brick + Prefinished Aluminum Siding

Loggerhead Plains Estates Corp. • 19'8" Condo Towns • March 2026 Unit setback and roofline may vary due to siting. Steps may vary at any exterior entrance ways due to grading variance. All dimensions are approximate only and subject to change without notice. Actual usable floor space may vary from stated floor area. All renderings are artist's concept, specifications, architectural and mechanical detailing are subject to minor modifications. Site plan not to scale and provided for general information only. All details should be confirmed with sales representative and/or municipality. Distances shown are in metres and can be converted to feet by dividing by 0.3048. E.&O.E.

BLOCK 6 • REAR ELEVATION • John Walker Crescent

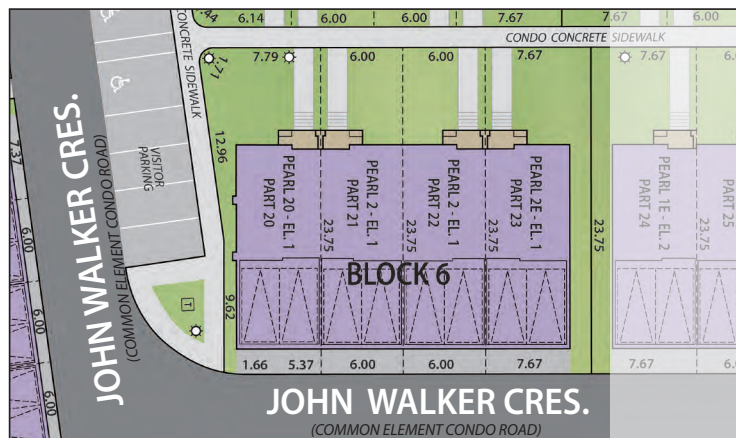


PEARL 20
ELEV. 1 • Part 20
2,277 Sq.Ft.

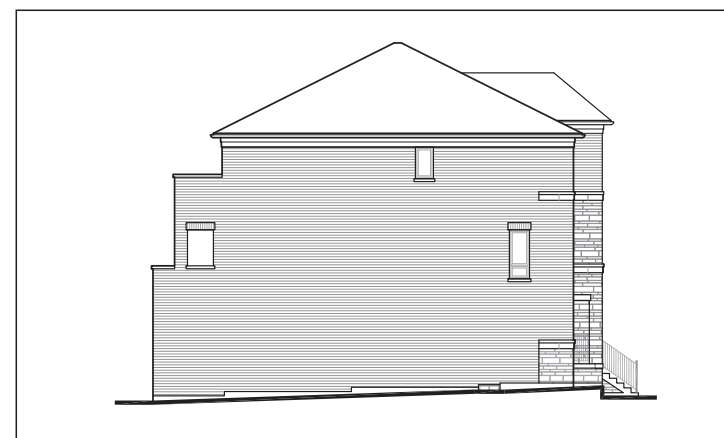
PEARL 2
ELEV. 1 • Part 21
2,197 Sq.Ft.

PEARL 2
ELEV. 1 • Part 22
2,197 Sq.Ft.

PEARL 2E
ELEV. 1 • Part 23
2,243 Sq.Ft.



BLOCK 6 • SITE PLAN



PEARL 2E • ELEV. 1 • Part 23 END ELEVATION

Main exterior building materials for front include: Elev. 1 • Cultured Stone + Brick

BLOCK 6 • FRONT ELEVATION

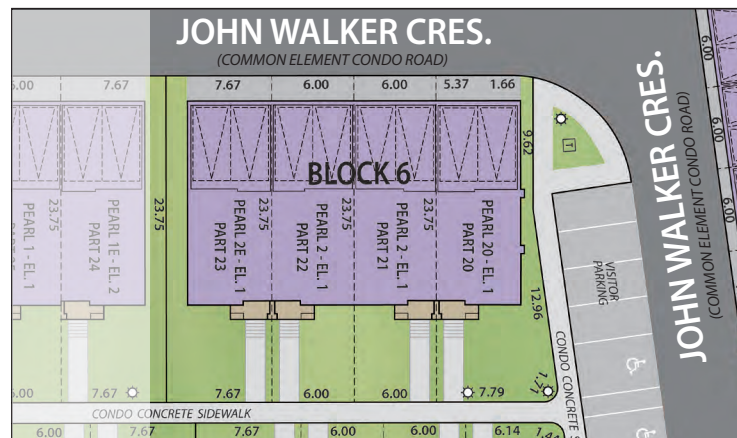


PEARL 2E
ELEV. 1 • Part 23
2,243 Sq.Ft.

PEARL 2
ELEV. 1 • Part 22
2,197 Sq.Ft.

PEARL 2
ELEV. 1 • Part 21
2,197 Sq.Ft.

PEARL 20
ELEV. 1 • Part 20
2,277 Sq.Ft.



BLOCK 6 • SITE PLAN



PEARL 20 • ELEV. 1 • Part 20 END ELEVATION

Main exterior building materials for front include: Elev. 1 • Cultured Stone + Brick

BLOCK 7 • REAR ELEVATION • John Walker Crescent

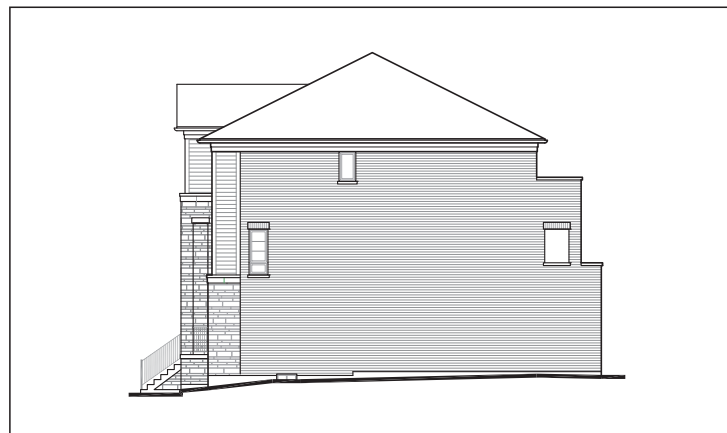


PEARL 1E
ELEV. 1 • Part 16
2,203 Sq.Ft.

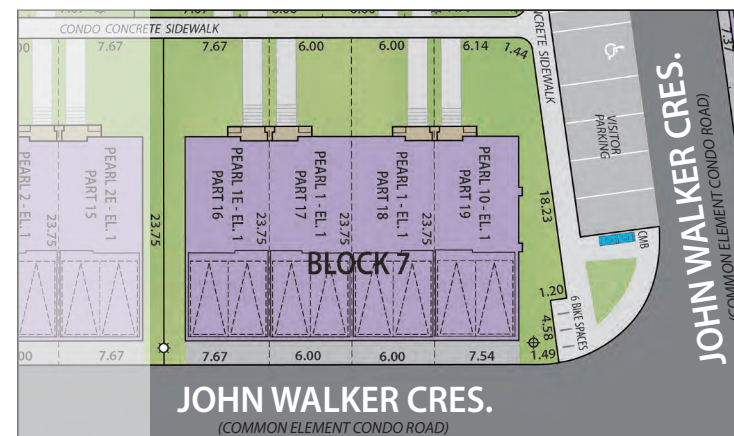
PEARL 1
ELEV. 1 • Part 17
2,160 Sq.Ft.

PEARL 1
ELEV. 1 • Part 18
2,160 Sq.Ft.

PEARL 10
ELEV. 1 • Part 19
2,230 Sq.Ft.



PEARL 1E • ELEV. 1 • Part 16 END ELEVATION



BLOCK 7 • SITE PLAN

Main exterior building materials for front include: Elev. 1 • Cultured Stone + Brick + Prefinished Aluminum Siding

BLOCK 7 • FRONT ELEVATION



PEARL 10
ELEV. 1 • Part 19
2,230 Sq.Ft.

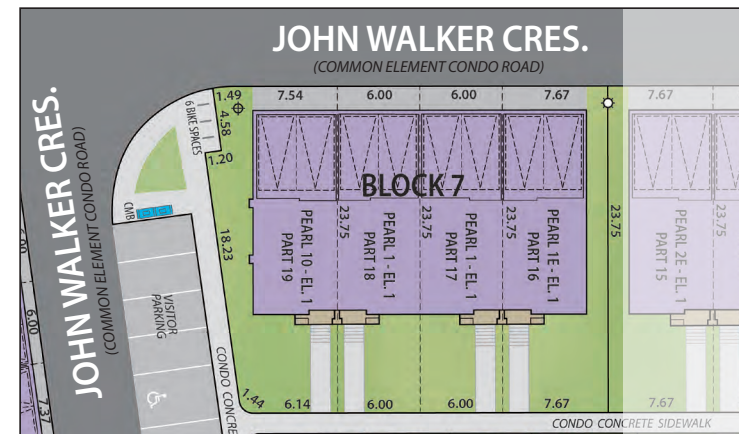
PEARL 1
ELEV. 1 • Part 18
2,160 Sq.Ft.

PEARL 1
ELEV. 1 • Part 17
2,160 Sq.Ft.

PEARL 1E
ELEV. 1 • Part 16
2,203 Sq.Ft.



PEARL 10 • ELEV. 1 • Part 19 END ELEVATION



BLOCK 7 • SITE PLAN

Main exterior building materials for front include: Elev. 1 • Cultured Stone + Brick + Prefinished Aluminum Siding

Loggerhead Plains Estates Corp. • 19'8" Condo Towns • March 2026 Unit setback and roofline may vary due to siting. Steps may vary at any exterior entrance ways due to grading variance. All dimensions are approximate only and subject to change without notice. Actual usable floor space may vary from stated floor area. All renderings are artist's concept, specifications, architectural and mechanical detailing are subject to minor modifications. Site plan not to scale and provided for general information only. All details should be confirmed with sales representative and/or municipality. Distances shown are in metres and can be converted to feet by dividing by 0.3048. E.&O.E.

BLOCK 8 • REAR ELEVATION • John Walker Crescent



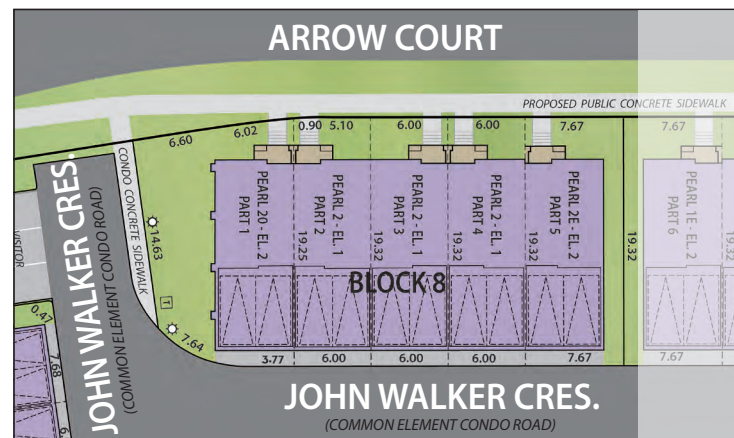
PEARL 20
ELEV. 2 • Part 1
2,304 Sq.Ft.

PEARL 2
ELEV. 1 • Part 2
2,197 Sq.Ft.

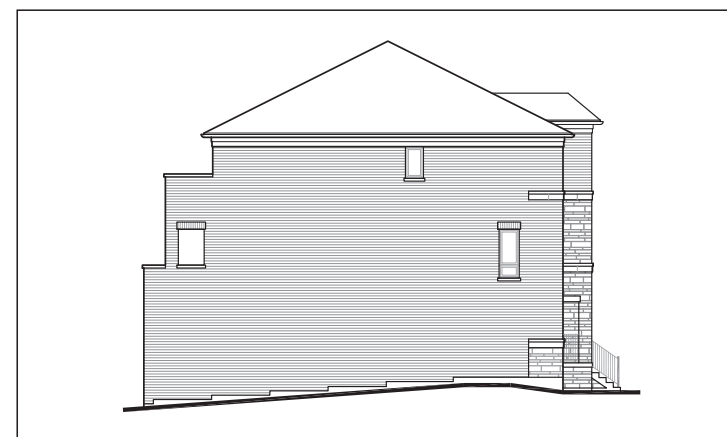
PEARL 2
ELEV. 1 • Part 3
2,197 Sq.Ft.

PEARL 2
ELEV. 1 • Part 4
2,197 Sq.Ft.

PEARL 2E
ELEV. 2 • Part 5
2,243 Sq.Ft.



BLOCK 8 • SITE PLAN



PEARL 2E • ELEV. 2 • Part 5 END ELEVATION

Main exterior building materials for front include: Elev. 1 & 2 • Cultured Stone + Brick

BLOCK 8 • FRONT ELEVATION • Arrow Court



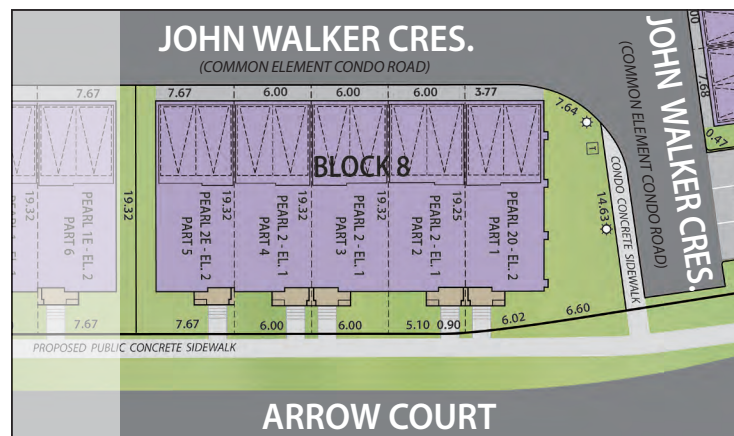
PEARL 2E
ELEV. 2 • Part 5
2,243 Sq.Ft.

PEARL 2
ELEV. 1 • Part 4
2,197 Sq.Ft.

PEARL 2
ELEV. 1 • Part 3
2,197 Sq.Ft.

PEARL 2
ELEV. 1 • Part 2
2,197 Sq.Ft.

PEARL 20
ELEV. 2 • Part 1
2,304 Sq.Ft.



BLOCK 8 • SITE PLAN



PEARL 20 • ELEV. 2 • Part 1 END ELEVATION

Main exterior building materials for front include: Elev. 1 & 2 • Cultured Stone + Brick

BLOCK 9 • REAR ELEVATION • John Walker Crescent



PEARL 2E
ELEV. 1 • Part 46
2,243 Sq.Ft.

PEARL 2
ELEV. 1 • Part 47
2,197 Sq.Ft.

PEARL 2
ELEV. 1 • Part 48
2,197 Sq.Ft.

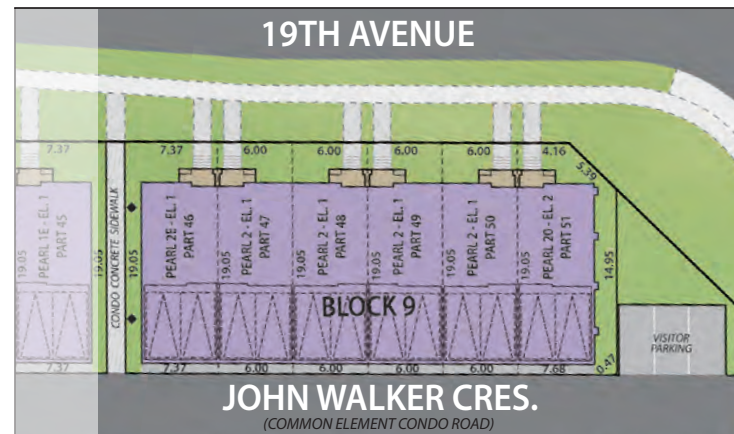
PEARL 2
ELEV. 1 • Part 49
2,197 Sq.Ft.

PEARL 2
ELEV. 1 • Part 50
2,197 Sq.Ft.

PEARL 20
ELEV. 2 • Part 51
2,304 Sq.Ft.



PEARL 2E • ELEV. 1 • Part 46 END ELEVATION



BLOCK 9 • SITE PLAN

Main exterior building materials for front include: Elev. 1 & 2 • Cultured Stone + Brick

BLOCK 9 • FRONT ELEVATION • 19th Avenue



PEARL 20
ELEV. 2 • Part 51
2,304 Sq.Ft.

PEARL 2
ELEV. 1 • Part 50
2,197 Sq.Ft.

PEARL 2
ELEV. 1 • Part 49
2,197 Sq.Ft.

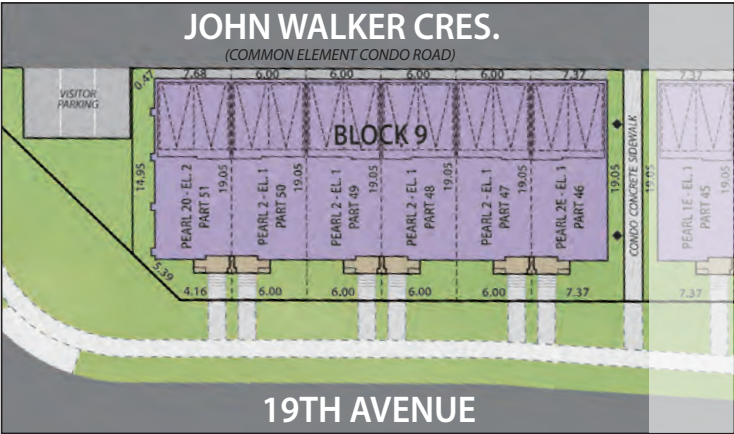
PEARL 2
ELEV. 1 • Part 48
2,197 Sq.Ft.

PEARL 2
ELEV. 1 • Part 47
2,197 Sq.Ft.

PEARL 2E
ELEV. 1 • Part 46
2,243 Sq.Ft.



PEARL 20 • ELEV. 2 • Part 51 END ELEVATION



Main exterior building materials for front include: Elev. 1 & 2 • Cultured Stone + Brick

Loggerhead Plains Estates Corp. • 19'8" Condo Towns • March 2026 Unit setback and roofline may vary due to siting. Steps may vary at any exterior entrance ways due to grading variance. All dimensions are approximate only and subject to change without notice. Actual usable floor space may vary from stated floor area. All renderings are artist's concept, specifications, architectural and mechanical detailing are subject to minor modifications. Site plan not to scale and provided for general information only. All details should be confirmed with sales representative and/or municipality. Distances shown are in metres and can be converted to feet by dividing by 0.3048. E.&O.E.

BLOCK 10 • REAR ELEVATION • John Walker Crescent



PEARL 10
ELEV. 2 • Part 38
2,266 Sq.Ft.

PEARL 1
ELEV. 1 • Part 39
2,160 Sq.Ft.

PEARL 1
ELEV. 1 • Part 40
2,160 Sq.Ft.

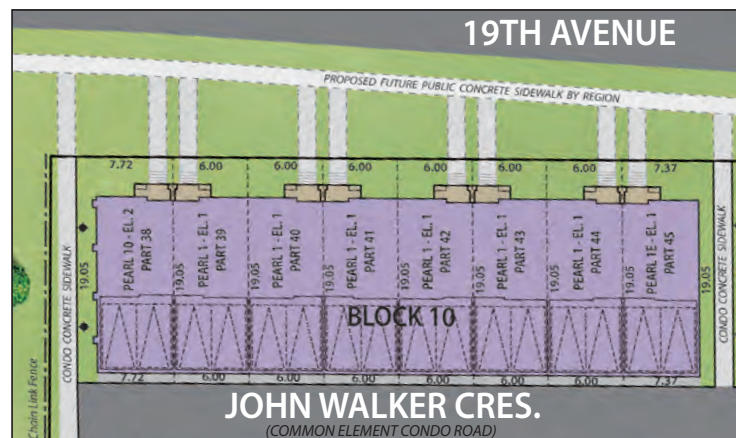
PEARL 1
ELEV. 1 • Part 41
2,160 Sq.Ft.

PEARL 1
ELEV. 1 • Part 42
2,160 Sq.Ft.

PEARL 1
ELEV. 1 • Part 43
2,160 Sq.Ft.

PEARL 1
ELEV. 1 • Part 44
2,160 Sq.Ft.

PEARL 1E
ELEV. 1 • Part 45
2,203 Sq.Ft.



BLOCK 10 • SITE PLAN



PEARL 1E • ELEV. 1 • Part 45 END ELEVATION

Main exterior building materials for front include: Elev. 1 & 2 • Cultured Stone + Brick + Prefinished Aluminum Siding

Loggerhead Plains Estates Corp. • 19'8" Condo Towns • March 2026 Unit setback and roofline may vary due to siting. Steps may vary at any exterior entrance ways due to grading variance. All dimensions are approximate only and subject to change without notice. Actual usable floor space may vary from stated floor area. All renderings are artist's concept, specifications, architectural and mechanical detailing are subject to minor modifications. Site plan not to scale and provided for general information only. All details should be confirmed with sales representative and/or municipality. Distances shown are in metres and can be converted to feet by dividing by 0.3048. E.&O.E.

BLOCK 10 • FRONT ELEVATION • 19th Avenue



PEARL 1E
ELEV. 1 • Part 45
2,203 Sq.Ft.

PEARL 1
ELEV. 1 • Part 44
2,160 Sq.Ft.

PEARL 1
ELEV. 1 • Part 43
2,160 Sq.Ft.

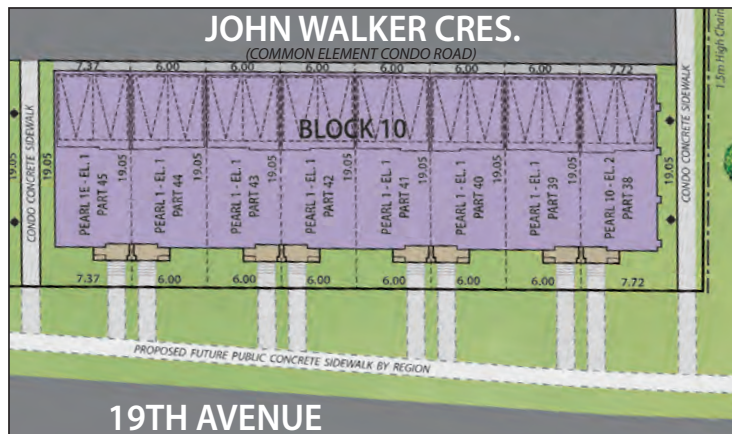
PEARL 1
ELEV. 1 • Part 42
2,160 Sq.Ft.

PEARL 1
ELEV. 1 • Part 41
2,160 Sq.Ft.

PEARL 1
ELEV. 1 • Part 40
2,160 Sq.Ft.

PEARL 1
ELEV. 1 • Part 39
2,160 Sq.Ft.

PEARL 10
ELEV. 2 • Part 38
2,266 Sq.Ft.



BLOCK 10 • SITE PLAN



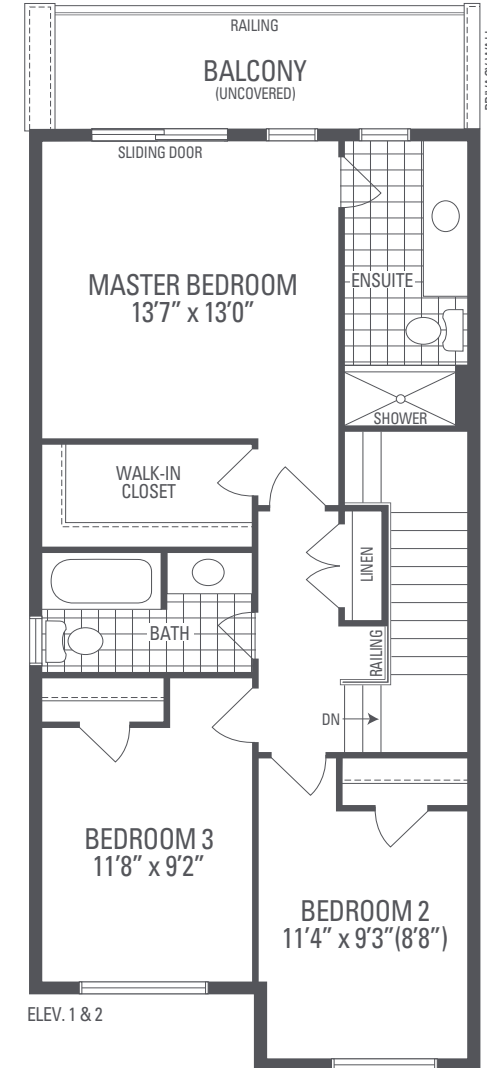
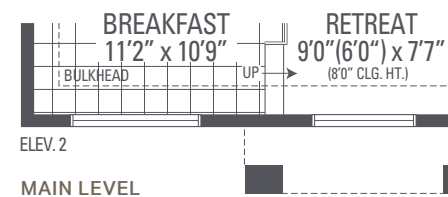
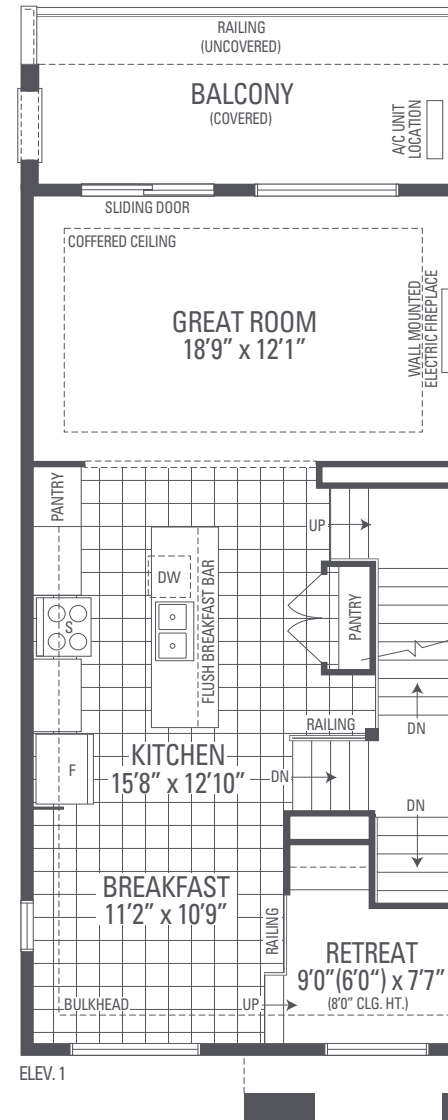
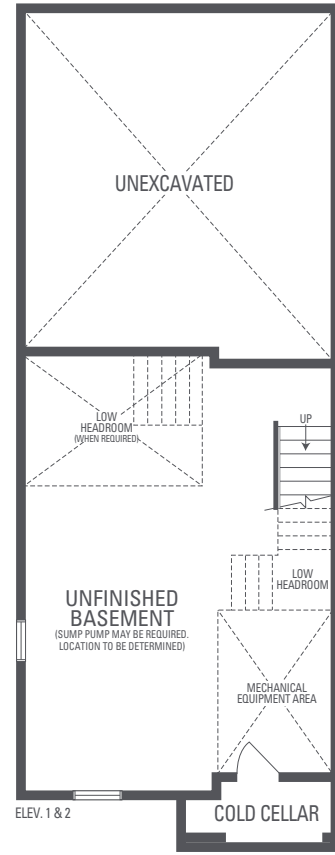
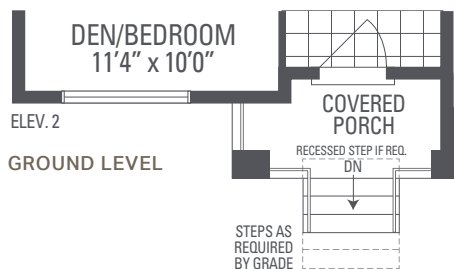
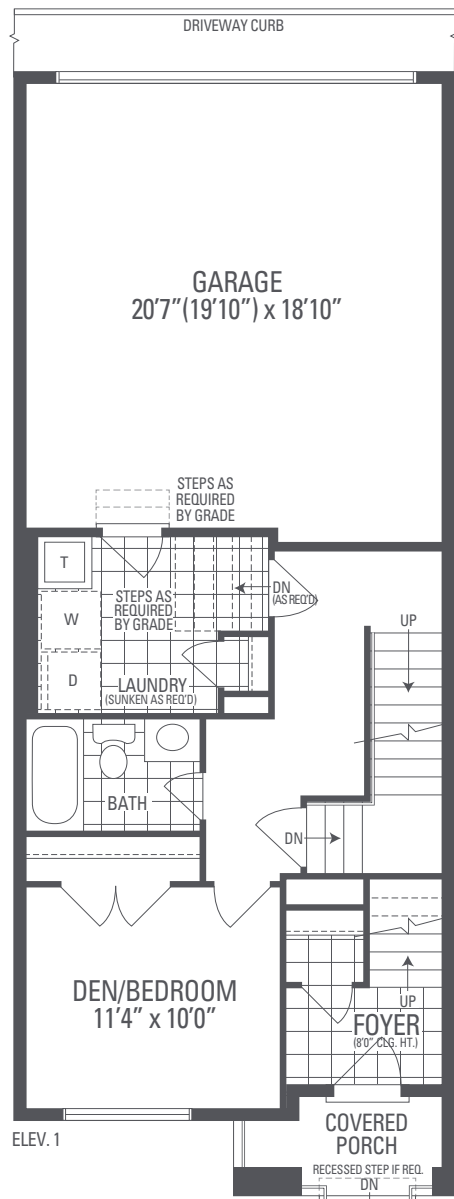
PEARL 10 • ELEV. 2 • Part 38 END ELEVATION

Main exterior building materials for front include: Elev. 1 & 2 • Cultured Stone + Brick + Prefinished Aluminum Siding

Loggerhead Plains Estates Corp. • 19'8" Condo Towns • March 2026 Unit setback and roofline may vary due to siting. Steps may vary at any exterior entrance ways due to grading variance. All dimensions are approximate only and subject to change without notice. Actual usable floor space may vary from stated floor area. All renderings are artist's concept, specifications, architectural and mechanical detailing are subject to minor modifications. Site plan not to scale and provided for general information only. All details should be confirmed with sales representative and/or municipality. Distances shown are in metres and can be converted to feet by dividing by 0.3048. E.&O.E.

PEARL 1E

Elevation 1 • 2,203 sq.ft. | Elevation 2 • 2,203 sq.ft.



Main exterior building materials for front include: Elev. 1 & 2 • Cultured Stone + Brick + Prefinished Aluminum Siding Loggerhead Plains Estates Corp. • 198" Condo Towns • March 2026

NOTE: Orientation of home may be reversed and purchaser agrees to accept the same. Unit setback and roofline may vary due to siting. Steps may vary at any exterior entrance ways due to grading variance. All dimensions are approximate only and subject to change without notice. Actual usable floor space may vary from stated floor area. All renderings are artist's concept, specifications, architectural and mechanical detailing are subject to minor modifications. Mechanical wall encroachments may be required into finished rooms and garage spaces. E.&O.E.