

36' LOT

Seville 4

Elevation 1 • 3,040 sq.ft. | Elevation 2 • 3,036 sq.ft. | Elevation 3 • 3,050 sq.ft.



ELEVATION 1



ELEVATION 2



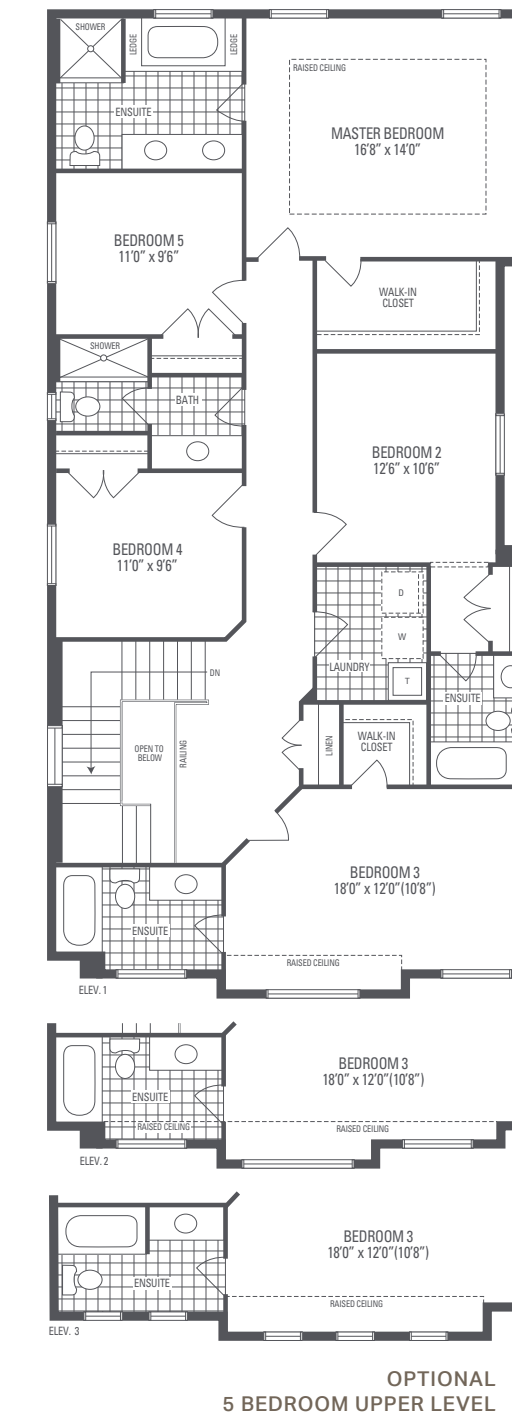
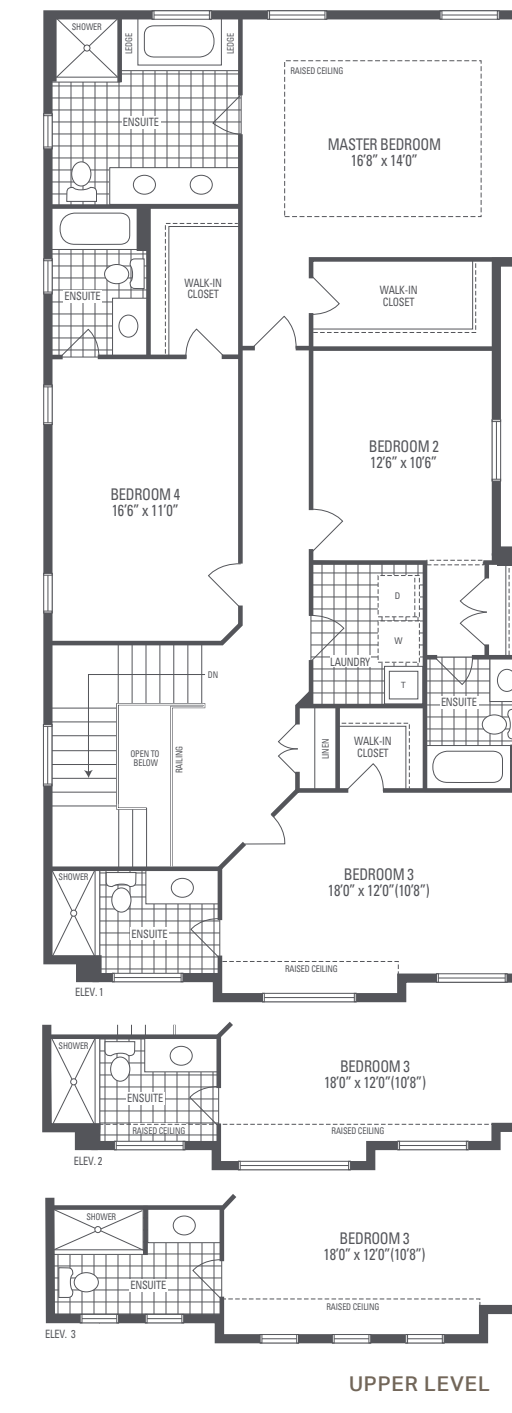
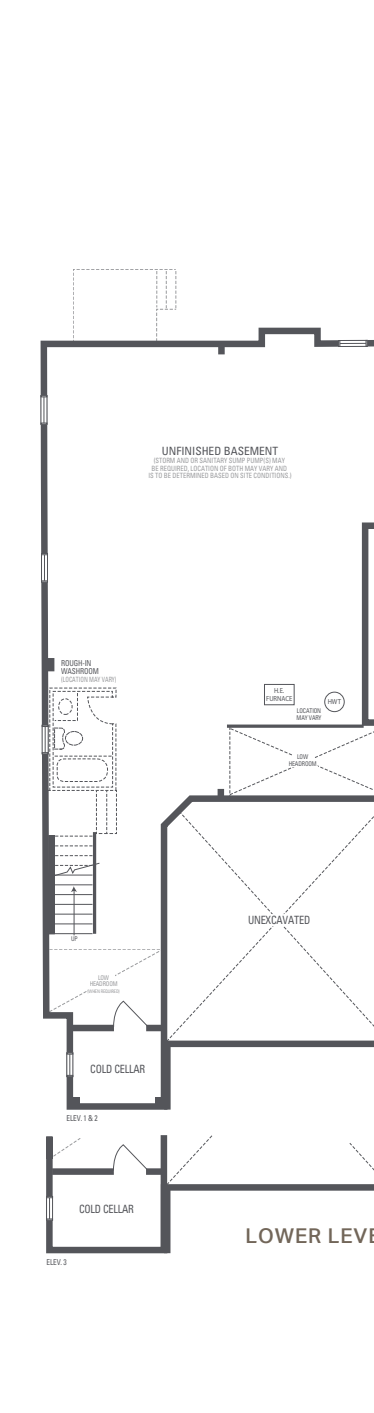
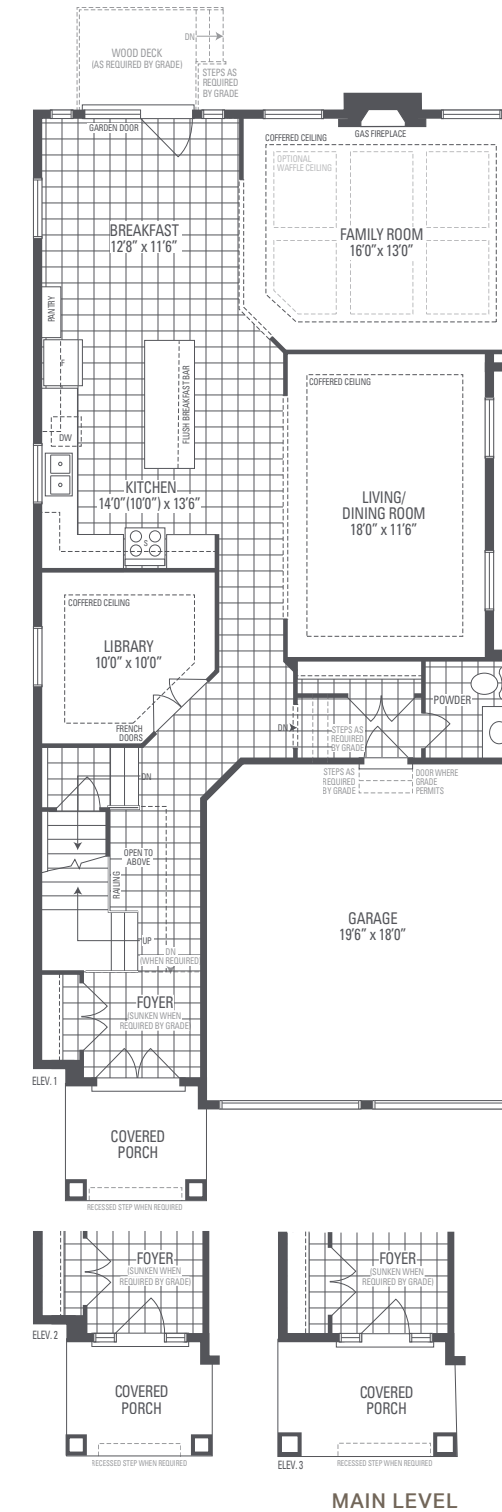
ELEVATION 3

Main exterior building materials for front include: Elev. 1 • Cultured Stone + Brick + Painted Products, Elev. 2 • Cultured Stone + Brick + Painted Products, Elev. 3 • Cultured Stone + Brick + Prefinished Aluminum Siding
Dancing Forests • 36' • November 2024

NOTE: Orientation of home may be reversed and purchaser agrees to accept the same. Unit setback and roofline may vary due to siting. Steps may vary at any exterior entrance ways due to grading variance. All dimensions are approximate only and subject to change without notice. Actual usable floor space may vary from stated floor area. All renderings are artist's concept, specifications, architectural and mechanical detailing are subject to minor modifications. Mechanical wall encroachments may be required into finished rooms and garage spaces. Elevation detail will vary with 10' main level ceiling height. E.&O.E.

Seville 4

FLOOR LAYOUTS FOR 10' MAIN LEVEL CEILING HEIGHT
Elevation 1 • 3,040 sq.ft. | Elevation 2 • 3,036 sq.ft. | Elevation 3 • 3,050 sq.ft.



MAIN LEVEL

LOWER LEVEL

UPPER LEVEL

OPTIONAL 5 BEDROOM UPPER LEVEL